

Product datasheet for PH300763

FUZ (NM_025129) Human Mass Spec Standard

Product data:

Product Type:	Mass Spec Standards
Description:	FUZ MS Standard C13 and N15-labeled recombinant protein (NP_079405)
Species:	Human
Expression Host:	HEK293
Expression cDNA Clone or AA Sequence:	RC200763
Predicted MW:	45.7 kDa
Protein Sequence:	>RC200763 protein sequence Red=Cloning site Green=Tags(s)
	<p>MGEEGTGGTVHLLCLAASSGVPLFCRSSRGGAPARQQLPFSVIGSLNGVHMFQONLEVQLSSARTENTTV VWKSFHDSITLIVLSSEVIGISELRLERLLQMVFAMVLLVGLEELTNIRNVERLKKDLRASYCLIDSFLG DSELIGDLTQCVCVIPPESLLQEALSGFAEAAGTTFVSLVVSGRVVAATEGWRLGTPEAVLLPWLVG SLPPQTARDYPVYLPHGSPTVPHRLTLTLLPSLELCLLCGSPPLSQLYPQLLERWWQPLLDPLRACLP LGPRALPSGFPLHTDILGLLLLHLELKRCLFTVEPLGDKEPSPEQRRLLRNFTLVSTHFPPEPGPPE KTEDEVYQAQLPRACYLVLGTEEPGTGVRLVALQLGLRRLLLLLSPQSPHGLRSLATHTLHALTPLL</p> <p>TRTRPLEQKLISEEDLAANDILDYKDDDDKV</p>
Tag:	C-Myc/DDK
Purity:	> 80% as determined by SDS-PAGE and Coomassie blue staining
Concentration:	>0.05 µg/µL as determined by microplate BCA method
Labeling Method:	Labeled with [U- ¹³ C ₆ , ¹⁵ N ₄]-L-Arginine and [U- ¹³ C ₆ , ¹⁵ N ₂]-L-Lysine
Buffer:	25 mM Tris-HCl, 100 mM glycine, pH 7.3
Storage:	Store at -80°C. Avoid repeated freeze-thaw cycles.
Stability:	Stable for 3 months from receipt of products under proper storage and handling conditions.
RefSeq:	<u>NP_079405</u>
RefSeq Size:	1762
RefSeq ORF:	1254
Synonyms:	CPLANE3; FY; NTD
Locus ID:	80199



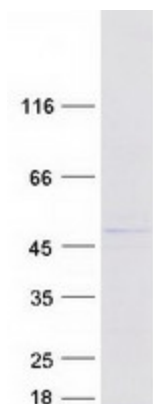
[View online »](#)

UniProt ID: [Q9BT04](#), [A0A024QZF7](#)

Cytogenetics: 19q13.33

Summary: This gene encodes a planar cell polarity protein that is involved in ciliogenesis and directional cell movement. Knockout studies in mice exhibit neural tube defects and defective cilia, and mutations in this gene are associated with neural tube defects in humans. Alternatively spliced transcript variants have been found for this gene. [provided by RefSeq, Jul 2012]

Product images:



Coomassie blue staining of purified FUZ protein (Cat# [TP300763]). The protein was produced from HEK293T cells transfected with FUZ cDNA clone (Cat# [RC200763]) using MegaTran 2.0 (Cat# [TT210002]).