

## Product datasheet for PH300756

### RNPEP (NM\_020216) Human Mass Spec Standard

#### Product data:

Product Type:	Mass Spec Standards
Description:	RNPEP MS Standard C13 and N15-labeled recombinant protein (NP_064601)
Species:	Human
Expression Host:	HEK293
Expression cDNA Clone or AA Sequence:	RC200756
Predicted MW:	72.4 kDa
Protein Sequence:	>RC200756 representing NM_020216 Red=Cloning site Green=Tags(s)

MASGEHSPGSGAARRPLHSAQAVDVASASNFRAFELLHLHLDLRAEFGPPGPGAGSRGLSGTAVLDRCL  
EPEGAAELRLDSHPCLEVTAAALRRERPGSEPPAEPVSFYTPPFQSHYGQALCVSFPQPCRAAERLQVLL  
TYRVGEGPGVCWLAPEQTAGKKKPFVYTQGGAVLNRAFFPCFDTPAVKYKYSALIEVPDGFATVMSASTW  
EKRGPNKFFFQMCQPIPSYLIALAIGDLVSAEVGPRSRVWAEPCLIDAAKEEYNGVIEEFATGEKLFGP  
YVWGRYDLLFMPPSFPFGGMENPCLTFVTPCLLAGDRSLADVIIHEISHSWFGNLVTNANWGEFWLNEGF  
TMYAQRRIISTILFGAAYTCLEAATGRALLRQHMDITGEENPLNKLRVKIEPGVDPDDTYNETPYEKGFCE  
VSYLAHLVGDQDQFDSFLKAYVHEFKFRSILADDFLDYLEYFPELKKRVDIIPGFEDRWLNTPGWPP  
YLPDLSPGDSLMPAEELAQLWAAEELDMKAIIEVAISPWKTYQLVYFLDKILQKSPGPNVKKLGDY  
PSISNARNAELRLRWQIVLKNHDQEDFWKVKEFLHNQKQKQYTLPLYHAMMGSEVAQTLAKETFASTA  
SQLHSNVVNYVQQIVAPKGS

TRTRPLEQKLISEEDLAANDILDYKDDDDKV

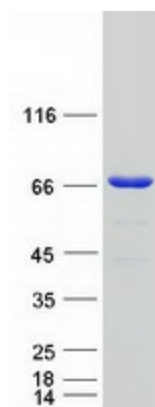
Tag:	C-Myc/DDK
Purity:	> 80% as determined by SDS-PAGE and Coomassie blue staining
Concentration:	>0.05 µg/µL as determined by microplate BCA method
Labeling Method:	Labeled with [U- 13C6, 15N4]-L-Arginine and [U- 13C6, 15N2]-L-Lysine
Buffer:	25 mM Tris-HCl, 100 mM glycine, pH 7.3
Storage:	Store at -80°C. Avoid repeated freeze-thaw cycles.
Stability:	Stable for 3 months from receipt of products under proper storage and handling conditions.
RefSeq:	<a href="#">NP_064601</a>
RefSeq Size:	2430



[View online »](#)

RefSeq ORF:	1950
Synonyms:	AP-B; APB
Locus ID:	6051
UniProt ID:	<a href="#">Q9H4A4</a>
Cytogenetics:	1q32.1
Summary:	Exopeptidase which selectively removes arginine and/or lysine residues from the N-terminus of several peptide substrates including Arg(0)-Leu-enkephalin, Arg(0)-Met-enkephalin and Arg(-1)-Lys(0)-somatostatin-14. Can hydrolyze leukotriene A4 (LTA-4) into leukotriene B4 (LTB-4) (By similarity).[UniProtKB/Swiss-Prot Function]
Protein Families:	Druggable Genome, Protease, Secreted Protein

### Product images:



Coomassie blue staining of purified RNPEP protein (Cat# [TP300756]). The protein was produced from HEK293T cells transfected with RNPEP cDNA clone (Cat# [RC200756]) using MegaTran 2.0 (Cat# [TT210002]).