

Product datasheet for PH300745

KCTD14 (NM_023930) Human Mass Spec Standard

Product data:

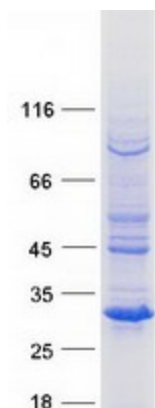
Product Type:	Mass Spec Standards
Description:	KCTD14 MS Standard C13 and N15-labeled recombinant protein (NP_076419)
Species:	Human
Expression Host:	HEK293
Expression cDNA Clone or AA Sequence:	RC200745
Predicted MW:	26.2 kDa
Protein Sequence:	>RC200745 protein sequence Red =Cloning site Green =Tags(s) MSTVVELNVGGEFHTTTLGTLRKFPKSLAEMFSSLAKASTDAEGRFFIDRPSTYFRPILDYLRTGQVPT QHPEVYREAQFYEIPLVKLLEDMPQIFGEQVSRKQFLQVPGYSENLELMVRLARAEAITARKSSVLV CLVETEEQDAYYSEVLCFLQDKKMFKSVKFGPWKAVLDNSDLMHCLEMDIKAQGYKVFVSKFYLYPTKR NEHFHNIYSFTFTWW TRTRPLEQKLISEEDLAANDILDYKDDDDKV
Tag:	C-Myc/DDK
Purity:	> 80% as determined by SDS-PAGE and Coomassie blue staining
Concentration:	>0.05 µg/µL as determined by microplate BCA method
Labeling Method:	Labeled with [U- ¹³ C ₆ , ¹⁵ N ₄]-L-Arginine and [U- ¹³ C ₆ , ¹⁵ N ₂]-L-Lysine
Buffer:	25 mM Tris-HCl, 100 mM glycine, pH 7.3
Storage:	Store at -80°C. Avoid repeated freeze-thaw cycles.
Stability:	Stable for 3 months from receipt of products under proper storage and handling conditions.
RefSeq:	NP_076419
RefSeq Size:	1688
RefSeq ORF:	675
Locus ID:	65987
UniProt ID:	Q9BQ13
Cytogenetics:	11q14.1



[View online »](#)

Protein Families: Ion Channels: Other

Product images:



Coomassie blue staining of purified KCTD14 protein (Cat# [TP300745]). The protein was produced from HEK293T cells transfected with KCTD14 cDNA clone (Cat# [RC200745]) using MegaTran 2.0 (Cat# [TT210002]).