

Product datasheet for PH300737

A RAF (ARAF) (NM_001654) Human Mass Spec Standard

Product data:

Product Type:	Mass Spec Standards
Description:	ARAF MS Standard C13 and N15-labeled recombinant protein (NP_001645)
Species:	Human
Expression Host:	HEK293
Expression cDNA Clone or AA Sequence:	RC200737
Predicted MW:	67.6 kDa
Protein Sequence:	>RC200737 protein sequence Red=Cloning site Green=Tags(s)

MEPPRGPPANGAEPSRAVGTVKVYLPNKQRTVVTVRDGMSVYDSDLKALKVRGLNQDCCVVYRLIKGRKT
VTAWDTAIAPLDGEELIVEVLEDVPLTMHNFVRKTFVSLAFCDCLKFLFHGFRQCQCGYKFHQHCSSKV
PTVCVDMSTNRQQFYHSVQDLGGSRQHEAPSNRPLNELLTPQGSPRTQHCDPEHFPPAPANAPLQRI
RSTSTPNVHMVSTTAPMDSNLIQLTGQSFSTDAAGSRGSDGTPRGSPSPASVSSGRKSPHSKSPAEQRE
RKSLADDDKKVKNLGYRDSGYYWEVPPSEVQLLKRIQTGSFGTVFRGRWHGDVAVKVLKVSQPTAEQAQA
FKNEMQVLRKTRHVNILLFMGMTRPGFAIITQWCEGSSLYHHLHVADTRFDMVQLIDVARQTAQGM DYL
HAKNIIHRDLKSNNIFLHEGLTVKIGDFGLATVKTRWGAQPLEQPSGSLVWMAAEVIRMQDPNPYSFQS
DYYAYGVVLYELMTGSLPYSHIGCRDQIIFMVGRGYLSPDLKISSNCPKAMRRLSDCLKFQREERPLF
PQILATIELLQRSLPKIERSASEPSLHRTQADELPACLLSAARLVP

TRTRPLEQKLISEEDLAANDILDYKDDDDKV

Tag:	C-Myc/DDK
Purity:	> 80% as determined by SDS-PAGE and Coomassie blue staining
Concentration:	>0.05 µg/µL as determined by microplate BCA method
Labeling Method:	Labeled with [U- ¹³ C ₆ , ¹⁵ N ₄]-L-Arginine and [U- ¹³ C ₆ , ¹⁵ N ₂]-L-Lysine
Buffer:	25 mM Tris-HCl, 100 mM glycine, pH 7.3
Storage:	Store at -80°C. Avoid repeated freeze-thaw cycles.
Stability:	Stable for 3 months from receipt of products under proper storage and handling conditions.
RefSeq:	NP_001645
RefSeq Size:	2562
RefSeq ORF:	1818



[View online »](#)

Synonyms: A-RAF; ARAF1; PKS2; RAFA1

Locus ID: 369

UniProt ID: [P10398](#), [A0A024R178](#)

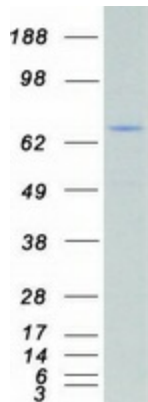
Cytogenetics: Xp11.3

Summary: This proto-oncogene belongs to the RAF subfamily of the Ser/Thr protein kinase family, and maybe involved in cell growth and development. Alternatively spliced transcript variants encoding different isoforms have been found for this gene.[provided by RefSeq, Jan 2012]

Protein Families: Druggable Genome, Protein Kinase

Protein Pathways: Acute myeloid leukemia, Bladder cancer, Chronic myeloid leukemia, Colorectal cancer, Endometrial cancer, ErbB signaling pathway, Glioma, Insulin signaling pathway, Long-term depression, Long-term potentiation, Melanoma, Natural killer cell mediated cytotoxicity, Non-small cell lung cancer, Pancreatic cancer, Pathways in cancer, Progesterone-mediated oocyte maturation, Prostate cancer, Regulation of actin cytoskeleton, Renal cell carcinoma, Vascular smooth muscle contraction

Product images:



Coomassie blue staining of purified ARAF protein (Cat# [TP300737]). The protein was produced from HEK293T cells transfected with ARAF cDNA clone (Cat# [RC200737]) using MegaTran 2.0 (Cat# [TT210002]).