

Product datasheet for PH300731

Integrin beta 5 (ITGB5) (NM_002213) Human Mass Spec Standard

Product data:

Product Type:	Mass Spec Standards
Description:	ITGB5 MS Standard C13 and N15-labeled recombinant protein (NP_002204)
Species:	Human
Expression Host:	HEK293
Expression cDNA Clone or AA Sequence:	RC200731
Predicted MW:	88.1 kDa
Protein Sequence:	>RC200731 protein sequence Red=Cloning site Green=Tags(s)

MPRAPAPLYACLLGLCALLPRLAGLNICTSGSATSCEECLLIHPKCAWCSKEDFGSPRSITSRCDLRANL
VKNGCGGEIESPASSFHVLRSLPLSSKGSAGWDVIQMTPEIAVNLRPDGKTTFQLQVRQVEDYVVDL
YYLMDLSLSMKDDLNIIRSLGTLAEEMRKLTSNFRLLGFGSFVDKDISPFSYAPRYQTNPICIGYKLFPN
CVPSFGFRHLLPLTDRVDSFNEEVRKQVRVSRNRDAPEGGFDAVLQAAVCKEKIGWRKDALHLLVFTTDDV
PHIALDGKLGGLVQPHDGGQCHLNEANEYASNQMDYPSLALLGEKLAENNINLIFAVTKNHMYLYKNFTA
LIPGTTVEILDGDSKNI IQLIINAYNSIRSKVELSVWDQPEDLNLFFATCQDGVSYPGQRKCEGLKIGD
TASFEVSLERSCPSRHEHVFALRPVGFGRDSLEVGVTYNCTCGCSVGLPNSARCNGSGTYVCGLCECS
PGYLGTRCECQDGENQSVYQNLCREAEGKPLCSGRGDCSCNQCSCFESEFGKIYGPFCEDNFSCARNKG
VLCSGHGECCHGECCHAGYIGDNCNCSTDI STCRGRDQICSERGHCLCGQCQCTEPGAFGEMCEKCPT
CPDACSTKRDCVECLLLHSGKPDNQTCHSLCRDEVITWVDTIVKDDQEAVLCFYKTAKDCVMMFTYVELP
SGKSNLTVLREPECGNTPNMTILLAVVGSILLVGLALLAIWKLVLTIHDRREFAKFQSERSRARYEMAS
NPLYRKP ISTHTVDFTFNKFNKSYNGTVD

TRTRPLEQKLI SEEDLAANDILDYKDDDDKV

Tag:	C-Myc/DDK
Purity:	> 80% as determined by SDS-PAGE and Coomassie blue staining
Concentration:	>0.05 µg/µL as determined by microplate BCA method
Labeling Method:	Labeled with [U- ¹³ C ₆ , ¹⁵ N ₄]-L-Arginine and [U- ¹³ C ₆ , ¹⁵ N ₂]-L-Lysine
Buffer:	25 mM Tris-HCl, 100 mM glycine, pH 7.3
Storage:	Store at -80°C. Avoid repeated freeze-thaw cycles.
Stability:	Stable for 3 months from receipt of products under proper storage and handling conditions.
RefSeq:	NP_002204



[View online >](#)

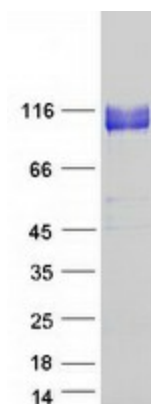
RefSeq Size:	3392
RefSeq ORF:	2397
Locus ID:	3693
UniProt ID:	P18084 , L7RT22
Cytogenetics:	3q21.2

Summary: This gene encodes a beta subunit of integrin, which can combine with different alpha chains to form a variety of integrin heterodimers. Integrins are integral cell-surface receptors that participate in cell adhesion as well as cell-surface mediated signaling. The alpha5 beta5 integrin is involved in adhesion to vitronectin. [provided by RefSeq, Aug 2017]

Protein Families: Druggable Genome, Transmembrane

Protein Pathways: Arrhythmogenic right ventricular cardiomyopathy (ARVC), Dilated cardiomyopathy, ECM-receptor interaction, Focal adhesion, Hypertrophic cardiomyopathy (HCM), Regulation of actin cytoskeleton

Product images:



Coomassie blue staining of purified ITGB5 protein (Cat# [TP300731]). The protein was produced from HEK293T cells transfected with ITGB5 cDNA clone (Cat# [RC200731]) using MegaTran 2.0 (Cat# [TT210002]).