

Product datasheet for PH300730

Lysozyme (LYZ) (NM_000239) Human Mass Spec Standard

Product data:

Product Type:	Mass Spec Standards
Description:	LYZ MS Standard C13 and N15-labeled recombinant protein (NP_000230)
Species:	Human
Expression Host:	HEK293
Expression cDNA Clone or AA Sequence:	RC200730
Predicted MW:	16.5 kDa
Protein Sequence:	>RC200730 protein sequence Red=Cloning site Green=Tags(s) MKALIVLGLVLLSVTVQGKVFERCELARTLKRLGMDGYRGISLANWMCLAKWESGYNTRATNYNAGRST DYGIFQINSRYWCNDGKTPGAVNACHLSCSALLQDNIADAVACAKRVVRDPQGIRAWVAWRNRCQNRDVR QYVQGGCV TRTRPLEQKLISEEDLAANDILDYKDDDDKV
Tag:	C-Myc/DDK
Purity:	> 80% as determined by SDS-PAGE and Coomassie blue staining
Concentration:	>0.05 µg/µL as determined by microplate BCA method
Labeling Method:	Labeled with [U- 13C6, 15N4]-L-Arginine and [U- 13C6, 15N2]-L-Lysine
Buffer:	25 mM Tris-HCl, 100 mM glycine, pH 7.3
Storage:	Store at -80°C. Avoid repeated freeze-thaw cycles.
Stability:	Stable for 3 months from receipt of products under proper storage and handling conditions.
RefSeq:	NP_000230
RefSeq Size:	1516
RefSeq ORF:	444
Synonyms:	LYZF1; LZM
Locus ID:	4069
UniProt ID:	P61626 , B2R4C5



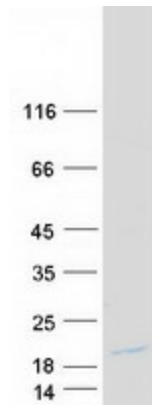
[View online »](#)

Cytogenetics: 12q15

Summary: This gene encodes human lysozyme, whose natural substrate is the bacterial cell wall peptidoglycan (cleaving the beta[1-4]glycosidic linkages between N-acetylmuramic acid and N-acetylglucosamine). Lysozyme is one of the antimicrobial agents found in human milk, and is also present in spleen, lung, kidney, white blood cells, plasma, saliva, and tears. The protein has antibacterial activity against a number of bacterial species. Missense mutations in this gene have been identified in heritable renal amyloidosis. [provided by RefSeq, Oct 2014]

Protein Families: Druggable Genome

Product images:



Coomassie blue staining of purified LYZ protein (Cat# [TP300730]). The protein was produced from HEK293T cells transfected with LYZ cDNA clone (Cat# [RC200730]) using MegaTran 2.0 (Cat# [TT210002]).