

## Product datasheet for PH300726

### RRM1 (NM\_001033) Human Mass Spec Standard

#### Product data:

Product Type:	Mass Spec Standards
Description:	RRM1 MS Standard C13 and N15-labeled recombinant protein (NP_001024)
Species:	Human
Expression Host:	HEK293
Expression cDNA Clone or AA Sequence:	RC200726
Predicted MW:	90.1 kDa
Protein Sequence:	>Peptide sequence encoded by RC200726 Blue=ORF Red=Cloning site Green=Tag(s)

MHVIKRDGRQERVMFDKITSRIQKLCYGLNMFVDPAQITMKVIQGLYSGVTTVELDTLAAETAATLTT  
KHPDYAILAARIAVSNLHKETKKVFSVDMEDLYNYPHNGKHSPMAKSTLDIVLANKDRLNSAIYD  
RDFSYNFYGFKTLERSYLLKINGKVAERPQHMLMRVSVGIIHKEDIDAAIETYNLLSERWFTHASPTLFN  
AGTNRPQLSSCFLLSMKDDSIIEGIYDTLKQCALISKSAGGIGVAVSCIRATGSYIAGTNGNSNGLVPML  
RVYNNTARYVDQGGNKRPGAFIYLEPWHLDIFEFLDLKKNTGKEEQRRARDLFFALWIPDLFMKRVTN  
QDWSLMCPNECPGLDEVWGEEFEKLYASYEKQGRVRKVVKAQQLWYAIIESQTETGTPYMLYKDCSNRK  
SNQONLGTIKCSNLCTEIVEYTSKDEVAVCNLASLALNMYVTSEHTYDFKKLAEVTKVVVRNLNKIIDI  
NYYPVPEACL SNKRHRPIGIGVQGLADAFILMRYPFESAEQLLNKQIFETIYYGALEASCDLAKEQGP  
YETYEGSPVSKGILQYDMWVPTDLWDWKVLKEKIAKYGIRNSLLIAPMPTASTAQILGNNEIIEPYT  
SNIYTRRVLSGEFQIVNPHLLKDLTERGLWHEEMKNQIIACNGSIQSIPEDDLKQLYKTVWEISQKT  
VLKMAAERGAFIDQSQSLNIHIAEPNYGKLTSMHFYGWKQGLKTGMYYLRTRPAANPIQFTLNKEKLLD  
KEKVSKEEEEKERNTAAMVCSLENRDECLMCGS  
TRTRPLEQKLISEEDLAANDILDYKDDDDKV

Recombinant protein using RC200726 also available, [TP300726](#)

Tag:	C-Myc/DDK
Purity:	> 80% as determined by SDS-PAGE and Coomassie blue staining
Concentration:	>0.05 µg/µL as determined by microplate BCA method
Labeling Method:	Labeled with [U- <sup>13</sup> C <sub>6</sub> , <sup>15</sup> N <sub>4</sub> ]-L-Arginine and [U- <sup>13</sup> C <sub>6</sub> , <sup>15</sup> N <sub>2</sub> ]-L-Lysine
Buffer:	25 mM Tris-HCl, 100 mM glycine, pH 7.3
Storage:	Store at -80°C. Avoid repeated freeze-thaw cycles.
Stability:	Stable for 3 months from receipt of products under proper storage and handling conditions.



[View online »](#)

RefSeq: [NP\\_001024](#)

RefSeq Size: 3117

RefSeq ORF: 2376

Synonyms: R1; RIR1; RR1

Locus ID: 6240

UniProt ID: [P23921](#)

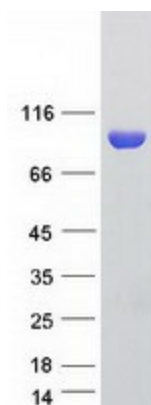
Cytogenetics: 11p15.4

**Summary:** This gene encodes the large and catalytic subunit of ribonucleotide reductase, an enzyme essential for the conversion of ribonucleotides into deoxyribonucleotides. A pool of available deoxyribonucleotides is important for DNA replication during S phase of the cell cycle as well as multiple DNA repair processes. Alternative splicing results in multiple transcript variants. [provided by RefSeq, Dec 2015]

**Protein Families:** Druggable Genome

**Protein Pathways:** Glutathione metabolism, Metabolic pathways, Purine metabolism, Pyrimidine metabolism

### Product images:



Coomassie blue staining of purified RRM1 protein (Cat# [TP300726]). The protein was produced from HEK293T cells transfected with RRM1 cDNA clone (Cat# [RC200726]) using MegaTran 2.0 (Cat# [TT210002]).