

Product datasheet for PH300708

Myosin (MYL6) (NM_021019) Human Mass Spec Standard

Product data:

Product Type:	Mass Spec Standards
Description:	MYL6 MS Standard C13 and N15-labeled recombinant protein (NP_066299)
Species:	Human
Expression Host:	HEK293
Expression cDNA Clone or AA Sequence:	RC200708
Predicted MW:	16.9 kDa
Protein Sequence:	>RC200708 protein sequence Red=Cloning site Green=Tags(s) MCDFTEDQTAEFKEAFQLFDRTGDGKILYSQCGDVMRALGQNPTNAEVLKVLGNPKSDEMNVKVLDFEHF LPMLQTVAKNKDQGTIEDYVEGLRVFDKEGNGTVMGAEIRHVLVTLGEKMTTEEEVEMLVAGHEDSNGCIN YEA FVRHILSG TRTRPLEQKLI SEEDLAANDILDYKDDDDKV
Tag:	C-Myc/DDK
Purity:	> 80% as determined by SDS-PAGE and Coomassie blue staining
Concentration:	>0.05 µg/µL as determined by microplate BCA method
Labeling Method:	Labeled with [U- 13C6, 15N4]-L-Arginine and [U- 13C6, 15N2]-L-Lysine
Buffer:	25 mM Tris-HCl, 100 mM glycine, pH 7.3
Storage:	Store at -80°C. Avoid repeated freeze-thaw cycles.
Stability:	Stable for 3 months from receipt of products under proper storage and handling conditions.
RefSeq:	NP_066299
RefSeq Size:	827
RefSeq ORF:	453
Synonyms:	ESMLC; LC17; LC17-GI; LC17-NM; LC17A; LC17B; MLC-3; MLC1SM; MLC3NM; MLC3SM
Locus ID:	4637
UniProt ID:	P60660



[View online »](#)

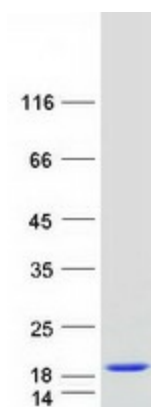
Cytogenetics: 12q13.2

Summary: Myosin is a hexameric ATPase cellular motor protein. It is composed of two heavy chains, two nonphosphorylatable alkali light chains, and two phosphorylatable regulatory light chains. This gene encodes a myosin alkali light chain that is expressed in smooth muscle and non-muscle tissues. Genomic sequences representing several pseudogenes have been described and two transcript variants encoding different isoforms have been identified for this gene. [provided by RefSeq, Jul 2008]

Protein Families: Druggable Genome

Protein Pathways: Vascular smooth muscle contraction

Product images:



Coomassie blue staining of purified MYL6 protein (Cat# [TP300708]). The protein was produced from HEK293T cells transfected with MYL6 cDNA clone (Cat# [RC200708]) using MegaTran 2.0 (Cat# [TT210002]).