

Product datasheet for PH300707

NAGA (NM_000262) Human Mass Spec Standard

Product data:

Product Type:	Mass Spec Standards
Description:	NAGA MS Standard C13 and N15-labeled recombinant protein (NP_000253)
Species:	Human
Expression Host:	HEK293
Expression cDNA Clone or AA Sequence:	RC200707
Predicted MW:	46.6 kDa
Protein Sequence:	>RC200707 protein sequence Red=Cloning site Green=Tags(s)

MLLKTVLLLGHVAQVLMNDNGLLQTPPMGWLAWERFRCNINCDDEDPKNCISEQLFMEMADRMAQDGWRDM
GYTYLNIDDCWIGGRDASGRLMPDPKRFPHGIPFLADYVHSLGKLGIYADMGNFTCMGYPGTTLDKVVQ
DAQTFAEWKVDMLKLDGCFSTPEERAQGYPKMAAALNATGRPIAFSCSWPAYEGGLPPRVNYSLLADICN
LWRNYDDIQDSWWSVLSILNWFVEHQDILQPVAGPGHWNDPDMLLIGNFGLSLEQSRAQMALWTVLAAPL
LMSTDLRTISAQNMDILQNPLMIKINQDPLGIQGRRIHKEKSLIEVYMRPLSNKASALVFFSCRTDMPYR
YHSSLGQLNFTGSVIYEADVYSGDIISGLRDETNTFTVIINPSGVVMWYLYPIKNLEMSQQ

TRTRPLEQKLISEEDLAANDILDYKDDDDKV

Tag:	C-Myc/DDK
Purity:	> 80% as determined by SDS-PAGE and Coomassie blue staining
Concentration:	>0.05 µg/µL as determined by microplate BCA method
Labeling Method:	Labeled with [U- ¹³ C ₆ , ¹⁵ N ₄]-L-Arginine and [U- ¹³ C ₆ , ¹⁵ N ₂]-L-Lysine
Buffer:	25 mM Tris-HCl, 100 mM glycine, pH 7.3
Storage:	Store at -80°C. Avoid repeated freeze-thaw cycles.
Stability:	Stable for 3 months from receipt of products under proper storage and handling conditions.
RefSeq:	<u>NP_000253</u>
RefSeq Size:	3726
RefSeq ORF:	1233
Synonyms:	D22S674; GALB
Locus ID:	4668



[View online »](#)

UniProt ID: [P17050](#), [A0A024R1Q5](#)

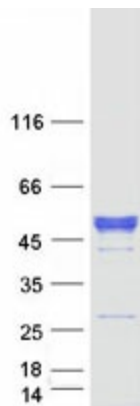
Cytogenetics: 22q13.2

Summary: NAGA encodes the lysosomal enzyme alpha-N-acetylgalactosaminidase, which cleaves alpha-N-acetylgalactosaminyl moieties from glycoconjugates. Mutations in NAGA have been identified as the cause of Schindler disease types I and II (type II also known as Kanzaki disease). [provided by RefSeq, Jul 2008]

Protein Families: Druggable Genome

Protein Pathways: Glycosphingolipid biosynthesis - globo series, Lysosome

Product images:



Coomassie blue staining of purified NAGA protein (Cat# [TP300707]). The protein was produced from HEK293T cells transfected with NAGA cDNA clone (Cat# [RC200707]) using MegaTran 2.0 (Cat# [TT210002]).