

Product datasheet for PH300704

NCF2 (NM_000433) Human Mass Spec Standard

Product data:

Product Type:	Mass Spec Standards
Description:	NCF2 MS Standard C13 and N15-labeled recombinant protein (NP_000424)
Species:	Human
Expression Host:	HEK293
Expression cDNA Clone or AA Sequence:	RC200704
Predicted MW:	59.6 kDa
Protein Sequence:	>RC200704 representing NM_000433 Red=Cloning site Green=Tags(s)

MSLVEAISLWNEGVLAADKKDWKDALDAFSAVQDPHSRICFNIGCMYTIILKNMTEAEKAFTRSINRDKHL
AVAYFQRGMLYYQTEKYDLAIKDLKEALIQLRGNQLIDYKILGLQFKLFACEVLYNIAFMYAKKEEWKKA
EEQLALATSMKSEPRHSKIDKAMECVWKQKLYEPVVIPVGRFRPNERQVAQLAKKDYLGKATVVASVVD
QDSFSGFAPLQPQAAEPPRPKTP EIFRALEGEAHRVLF GFVPETKEELQVMPGNIVFVLKKGNDNWATV
MFNGQKGLVPCNYLEPVELRIHPQQPQEESSPQSDIPAPPSSKAPGRPQLSPGQKQKEEPKEVKLSVPM
PYTLKVHYKYTVVMKTQPGLPYSQVRDMVSKLELRLEQTKLSYRPRDSNELVPLSEDSMKDAWGQVKNY
CLTLWCENTVGDQGFPEPKSEKADANNQTTEPQLKKGQSVEALFSYEATQPEDLEFQEGDIILVLSKV
NEEWLEGECKGKVGIFPKVFVEDCATTDLESTRREV

TRTRPLEQKLI SEEDLAANDILDYKDDDDKV

Tag:	C-Myc/DDK
Purity:	> 80% as determined by SDS-PAGE and Coomassie blue staining
Concentration:	>0.05 µg/µL as determined by microplate BCA method
Labeling Method:	Labeled with [U- ¹³ C ₆ , ¹⁵ N ₄]-L-Arginine and [U- ¹³ C ₆ , ¹⁵ N ₂]-L-Lysine
Buffer:	25 mM Tris-HCl, 100 mM glycine, pH 7.3
Storage:	Store at -80°C. Avoid repeated freeze-thaw cycles.
Stability:	Stable for 3 months from receipt of products under proper storage and handling conditions.
RefSeq:	NP_000424
RefSeq Size:	2406
RefSeq ORF:	1578



[View online »](#)

Synonyms: NCF-2; NOXA2; P67-PHOX; P67PHOX

Locus ID: 4688

UniProt ID: [P19878](#), [A0A0S2Z457](#)

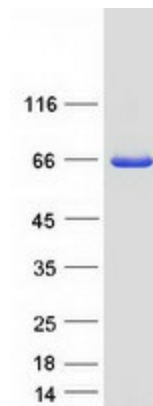
Cytogenetics: 1q25.3

Summary: This gene encodes neutrophil cytosolic factor 2, the 67-kilodalton cytosolic subunit of the multi-protein NADPH oxidase complex found in neutrophils. This oxidase produces a burst of superoxide which is delivered to the lumen of the neutrophil phagosome. Mutations in this gene, as well as in other NADPH oxidase subunits, can result in chronic granulomatous disease, a disease that causes recurrent infections by catalase-positive organisms. Alternative splicing results in multiple transcript variants encoding different isoforms. [provided by RefSeq, Jun 2010]

Protein Families: Druggable Genome

Protein Pathways: Leukocyte transendothelial migration

Product images:



Coomassie blue staining of purified NCF2 protein (Cat# [TP300704]). The protein was produced from HEK293T cells transfected with NCF2 cDNA clone (Cat# [RC200704]) using MegaTran 2.0 (Cat# [TT210002]).