

Product datasheet for PH300695

FLI1 (NM_002017) Human Mass Spec Standard

Product data:

Product Type:	Mass Spec Standards
Description:	FLI1 MS Standard C13 and N15-labeled recombinant protein (NP_002008)
Species:	Human
Expression Host:	HEK293
Expression cDNA Clone or AA Sequence:	RC200695
Predicted MW:	51 kDa
Protein Sequence:	>RC200695 protein sequence Red=Cloning site Green=Tags(s) MDGTIKEALSVVSDQSLFDSAYGAAAHLPKADMTASGSPDYGQPHKINPLPPQEQWINQPVRVNVKREY DHMNGSRESPVDCSVSKCSKLVGGGESNPMNYSYMDEKNGPPPNMTTNERRVIVPADPTLWTQEHVRQ WLEWAIKEYSLMEIDTSFFQNMDGKELCKMNKEDFLRATTLYNTEVLLSHLSYLRESSLLAYNTTSHTDQ SSRLSVKEDPSYDSVRRGAWGNMNSGLNKSPPLGGAQTI SKNTEQRPQPDYQILGPTSSRLANPGSGQ IQLWQFLLELLSDSANASCITWEGTNGEFKMTDPDEVARRWGERKSKPNMNYDKLSRALRYYYDKNIMTK VHGKRYAYKDFDHGIAQALQPHPTESSMYKYPDSISYMP SYHAHQKQVNFVPPHPSSMPVTSSSFFGAAS QYWTSPTGGIYPNPNVPRHPNTHVPSHLGSYY TRTRPLEQKLI SEEDLAANDILDYKDDDDKV
Tag:	C-Myc/DDK
Purity:	> 80% as determined by SDS-PAGE and Coomassie blue staining
Concentration:	>0.05 µg/µL as determined by microplate BCA method
Labeling Method:	Labeled with [U- ¹³ C ₆ , ¹⁵ N ₄]-L-Arginine and [U- ¹³ C ₆ , ¹⁵ N ₂]-L-Lysine
Buffer:	25 mM Tris-HCl, 100 mM glycine, pH 7.3
Storage:	Store at -80°C. Avoid repeated freeze-thaw cycles.
Stability:	Stable for 3 months from receipt of products under proper storage and handling conditions.
RefSeq:	<u>NP_002008</u>
RefSeq Size:	3995
RefSeq ORF:	1356
Synonyms:	BDPLT21; EWSR2; SIC-1



[View online »](#)

Locus ID: 2313

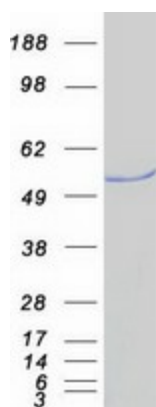
UniProt ID: [Q01543](#), [A0A024R3M5](#)

Cytogenetics: 11q24.3

Summary: This gene encodes a transcription factor containing an ETS DNA-binding domain. The gene can undergo a t(11;22)(q24;q12) translocation with the Ewing sarcoma gene on chromosome 22, which results in a fusion gene that is present in the majority of Ewing sarcoma cases. An acute lymphoblastic leukemia-associated t(4;11)(q21;q23) translocation involving this gene has also been identified. Alternative splicing results in multiple transcript variants. [provided by RefSeq, Aug 2012]

Protein Families: Transcription Factors

Product images:



Coomassie blue staining of purified FLI1 protein (Cat# [TP300695]). The protein was produced from HEK293T cells transfected with FLI1 cDNA clone (Cat# [RC200695]) using MegaTran 2.0 (Cat# [TT210002]).