

Product datasheet for PH300689

RPL24 (NM_000986) Human Mass Spec Standard

Product data:

Product Type:	Mass Spec Standards
Description:	RPL24 MS Standard C13 and N15-labeled recombinant protein (NP_000977)
Species:	Human
Expression Host:	HEK293
Expression cDNA Clone or AA Sequence:	RC200689
Predicted MW:	17.8 kDa
Protein Sequence:	>RC200689 protein sequence Red=Cloning site Green=Tags(s) MKVELCSFSGYKIYPGHRRYARTDGKVFQFLNAKCESAFLSKRNPRQINWTVLYRRKHKKGQSEEIQKK RTRRAVKFQRAITGASLADIMAKRNQKPEVRKAQREQAIRAAKEAKKAKQASKKTAMAAAKAPTKAAPKQ KIVKPKVKSAPRVGGKR TRTRPLEQKLISEEDLAANDILDYKDDDDKV
Tag:	C-Myc/DDK
Purity:	> 80% as determined by SDS-PAGE and Coomassie blue staining
Concentration:	>0.05 µg/µL as determined by microplate BCA method
Labeling Method:	Labeled with [U- 13C6, 15N4]-L-Arginine and [U- 13C6, 15N2]-L-Lysine
Buffer:	25 mM Tris-HCl, 100 mM glycine, pH 7.3
Storage:	Store at -80°C. Avoid repeated freeze-thaw cycles.
Stability:	Stable for 3 months from receipt of products under proper storage and handling conditions.
RefSeq:	<u>NP_000977</u>
RefSeq Size:	579
RefSeq ORF:	471
Synonyms:	HEL-S-310; L24
Locus ID:	6152
UniProt ID:	<u>P83731, V9HW01</u>



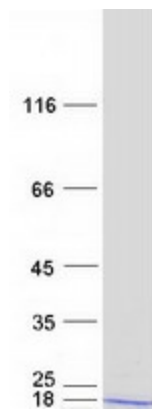
[View online »](#)

Cytogenetics: 3q12.3

Summary: Ribosomes, the organelles that catalyze protein synthesis, consist of a small 40S subunit and a large 60S subunit. Together these subunits are composed of 4 RNA species and approximately 80 structurally distinct proteins. This gene encodes a ribosomal protein that is a component of the 60S subunit. The protein belongs to the L24E family of ribosomal proteins. It is located in the cytoplasm. This gene has been referred to as ribosomal protein L30 because the encoded protein shares amino acid identity with the L30 ribosomal proteins from *S. cerevisiae*; however, its official name is ribosomal protein L24. As is typical for genes encoding ribosomal proteins, there are multiple processed pseudogenes of this gene dispersed through the genome. [provided by RefSeq, Jul 2008]

Protein Pathways: Ribosome

Product images:



Coomassie blue staining of purified RPL24 protein (Cat# [TP300689]). The protein was produced from HEK293T cells transfected with RPL24 cDNA clone (Cat# [RC200689]) using MegaTran 2.0 (Cat# [TT210002]).