

Product datasheet for PH300686

TCP1 alpha (TCP1) (NM_030752) Human Mass Spec Standard

Product data:

Product Type:	Mass Spec Standards
Description:	TCP1 MS Standard C13 and N15-labeled recombinant protein (NP_110379)
Species:	Human
Expression Host:	HEK293
Expression cDNA Clone or AA Sequence:	RC200686
Predicted MW:	60.3 kDa
Protein Sequence:	>RC200686 protein sequence Red=Cloning site Green=Tags(s)
	MEGPLSVFGDRSTGETIRSQNVMAAASIANIVKSSLGPVGLDKMLVDDIGDVTITNDGATILKLLVEHP AAKVLCELADLQDKEVGDGTTSVVIAAELLKNADELVKQKIHPTSVISGYRLACKEAVRYINENLIVNT DELGRDCLINAAKTSMSSKIIGINGDFFANMVVDAVLAIKYTDIRGQPRYPVNSVNILKAHGRSQMESML ISGYALNCVVGSGMPKRIVNAKIACLDFSLQTKMKLGVQVITDPEKLDQIRQRESKITKRIQKILA TGANVILTTGGIDDMCLKYFVEAGAMAVRRVLKRDLEKRIAKASGATILSTLANLEGEETFEAAMLGQAE VVQERICDDELILIKNTKARTSASIIILRGANDFMCDEMERSLHDALCVVKRVLESKSVVPGGAVEAALS IYLENYATSMGSREQLAIAEFARSLLVIPNTLAVNAAQDSTDLVAKLRAFHNEAQVNPERKNLKWIGLDL SNGKPRDNKQAGVFPEPTIVKVKSLKFATEAAITILRIDDLIKLHPESKDDKHGSYEDAVHSGALND
	TRTRPLEQKLISEEDLAANDILDYKDDDDKV
Tag:	C-Myc/DDK
Purity:	> 80% as determined by SDS-PAGE and Coomassie blue staining
Concentration:	>0.05 µg/µL as determined by microplate BCA method
Labeling Method:	Labeled with [U- 13C6, 15N4]-L-Arginine and [U- 13C6, 15N2]-L-Lysine
Buffer:	25 mM Tris-HCl, 100 mM glycine, pH 7.3
Storage:	Store at -80°C. Avoid repeated freeze-thaw cycles.
Stability:	Stable for 3 months from receipt of products under proper storage and handling conditions.
RefSeq:	NP_110379
RefSeq Size:	2463
RefSeq ORF:	1668

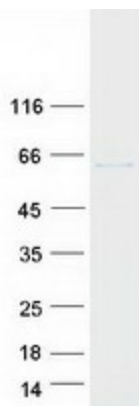


[View online »](#)

Synonyms: CCT-alpha; CCT1; CCTa; D6S230E; TCP-1-alpha
Locus ID: 6950
UniProt ID: [P17987](#)
Cytogenetics: 6q25.3

Summary: The protein encoded by this gene is a molecular chaperone that is a member of the chaperonin containing TCP1 complex (CCT), also known as the TCP1 ring complex (TRiC). This complex consists of two identical stacked rings, each containing eight different proteins. Unfolded polypeptides enter the central cavity of the complex and are folded in an ATP-dependent manner. The complex folds various proteins, including actin and tubulin. Alternate transcriptional splice variants of this gene, encoding different isoforms, have been characterized. In addition, three pseudogenes that appear to be derived from this gene have been found. [provided by RefSeq, Jun 2010]

Product images:



Coomassie blue staining of purified TCP1 protein (Cat# [TP300686]). The protein was produced from HEK293T cells transfected with TCP1 cDNA clone (Cat# [RC200686]) using MegaTran 2.0 (Cat# [TT210002]).