

Product datasheet for PH300680

NME2 (NM_001018139) Human Mass Spec Standard

Product data:

Product Type:	Mass Spec Standards
Description:	NME2 MS Standard C13 and N15-labeled recombinant protein (NP_001018149)
Species:	Human
Expression Host:	HEK293
Expression cDNA Clone or AA Sequence:	RC200680
Predicted MW:	17.3 kDa
Protein Sequence:	>RC200680 protein sequence Red=Cloning site Green=Tags(s) MANLERTFIAIKPDGVQRGLVGEI IKRFEQKGFRLVAMKFLRASEEHLKQHYIDLKDRPFFPGLVKYMNS GPVVAMVWEGLNVVKTGRVMLGETNPADSKPGTIRGDFCIQVGRNIIHGSDSVKSAEKEISLWFKPEELV DYKSCAHDWVYE TRTRPLEQKLI SEEDLAANDILDYKDDDDKV
Tag:	C-Myc/DDK
Purity:	> 80% as determined by SDS-PAGE and Coomassie blue staining
Concentration:	>0.05 µg/µL as determined by microplate BCA method
Labeling Method:	Labeled with [U- ¹³ C ₆ , ¹⁵ N ₄]-L-Arginine and [U- ¹³ C ₆ , ¹⁵ N ₂]-L-Lysine
Buffer:	25 mM Tris-HCl, 100 mM glycine, pH 7.3
Storage:	Store at -80°C. Avoid repeated freeze-thaw cycles.
Stability:	Stable for 3 months from receipt of products under proper storage and handling conditions.
RefSeq:	NP_001018149
RefSeq Size:	682
RefSeq ORF:	456
Synonyms:	NDKB; NDPK-B; NDPKB; NM23-H2; NM23B; PUF
Locus ID:	4831
UniProt ID:	P22392 , Q6FHN3



[View online »](#)

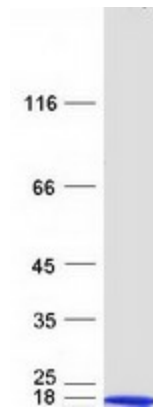
Cytogenetics: 17q21.33

Summary: Nucleoside diphosphate kinase (NDK) exists as a hexamer composed of 'A' (encoded by NME1) and 'B' (encoded by this gene) isoforms. Multiple alternatively spliced transcript variants have been found for this gene. Read-through transcription from the neighboring upstream gene (NME1) generates naturally-occurring transcripts (NME1-NME2) that encode a fusion protein comprised of sequence sharing identity with each individual gene product. [provided by RefSeq, Nov 2010]

Protein Families: Druggable Genome, Transcription Factors

Protein Pathways: Metabolic pathways, Purine metabolism, Pyrimidine metabolism

Product images:



Coomassie blue staining of purified NME2 protein (Cat# [TP300680]). The protein was produced from HEK293T cells transfected with NME2 cDNA clone (Cat# [RC200680]) using MegaTran 2.0 (Cat# [TT210002]).