

Product datasheet for PH300675

RAB8A (NM_005370) Human Mass Spec Standard

Product data:

Product Type:	Mass Spec Standards
Description:	RAB8A MS Standard C13 and N15-labeled recombinant protein (NP_005361)
Species:	Human
Expression Host:	HEK293
Expression cDNA Clone or AA Sequence:	RC200675
Predicted MW:	23.7 kDa
Protein Sequence:	>RC200675 protein sequence Red=Cloning site Green=Tags(s) MAKTYDYLFKLLLLIGDSGVGKTCVLFSEDAFNSTFISTIGIDFKIRTIELDGGKRIKLQIWDTAGQERF RTITTAYYRGAMGIMLVYDITNEKSFNIRNWIRNIEEHASADVEKMILGNKCDVNDKRQVSKERGEKLA LDYGIKFMETSAKANINVENAFFTLARDIKAKMDKKLEGNSPQGSNQGKVKITPDQQRSSFFRCVLL TRTRPLEQKLISEEDLAANDILDYKDDDDKV
Tag:	C-Myc/DDK
Purity:	> 80% as determined by SDS-PAGE and Coomassie blue staining
Concentration:	>0.05 µg/µL as determined by microplate BCA method
Labeling Method:	Labeled with [U- ¹³ C ₆ , ¹⁵ N ₄]-L-Arginine and [U- ¹³ C ₆ , ¹⁵ N ₂]-L-Lysine
Buffer:	25 mM Tris-HCl, 100 mM glycine, pH 7.3
Storage:	Store at -80°C. Avoid repeated freeze-thaw cycles.
Stability:	Stable for 3 months from receipt of products under proper storage and handling conditions.
RefSeq:	NP_005361
RefSeq Size:	2194
RefSeq ORF:	621
Synonyms:	MEL; RAB8
Locus ID:	4218
UniProt ID:	P61006 , A0A024R7I3



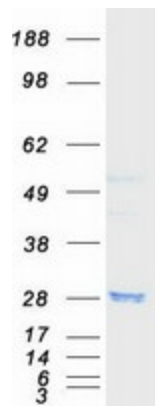
[View online »](#)

Cytogenetics: 19p13.11

Summary: The protein encoded by this gene is a member of the RAS superfamily which are small GTP/GDP-binding proteins with an average size of 200 amino acids. The RAS-related proteins of the RAB/YPT family may play a role in the transport of proteins from the endoplasmic reticulum to the Golgi and the plasma membrane. This protein shares 97%, 96%, and 51% similarity with the dog RAB8, mouse MEL, and mouse YPT1 proteins, respectively and contains the 4 GTP/GDP-binding sites that are present in all the RAS proteins. The putative effector-binding site of this protein is similar to that of the RAB/YPT proteins. However, this protein contains a C-terminal CAAX motif that is characteristic of many RAS superfamily members but which is not found in YPT1 and the majority of RAB proteins. Although this gene was isolated as a transforming gene from a melanoma cell line, no linkage between MEL and malignant melanoma has been demonstrable. This oncogene is located 800 kb distal to MY09B on chromosome 19p13.1. [provided by RefSeq, Jul 2008]

Protein Families: Druggable Genome, Transcription Factors

Product images:



Coomassie blue staining of purified RAB8A protein (Cat# [TP300675]). The protein was produced from HEK293T cells transfected with RAB8A cDNA clone (Cat# [RC200675]) using MegaTran 2.0 (Cat# [TT210002]).