

Product datasheet for PH300668

SERPINB6 (NM_004568) Human Mass Spec Standard

Product data:

Product Type:	Mass Spec Standards
Description:	SERPINB6 MS Standard C13 and N15-labeled recombinant protein (NP_004559)
Species:	Human
Expression Host:	HEK293
Expression cDNA Clone or AA Sequence:	RC200668
Predicted MW:	42.4 kDa
Protein Sequence:	>RC200668 representing NM_004568 Red=Cloning site Green=Tags(s) MDVLAEANGTFALNLLKTLGKDNSKNVFFSPMSMSCALAMVYMGAKGNTAAQMAQILSFNKSGGGDIHQ GFQSLLEVNKTGTQYLLRMANRLFGEKSCDFLSSFRDSCQKIFYQAEMEELDFISAVEKSRKHINTWVAE KTEGKIAELLSPGSVDPLTRLVLVNAVYFRGNWDEQFDKENTEERLFKVSKNEEKPVQMMFKQSTFKKTY IGEIFTQILVLPYVGKELNMIIMLPDETDLRTEKELTYEKFVEWTRLDMMDEEEVEVSLPRFKLEESY DMESVLRNLGMTDAFELGKADFGMSQTDLSLSKVVHKSFEVNEEGTEAAAATAAIMMRCARFVPRFC ADHPFLFFIQHKTNGILFCGRFSSP TRTRPLEQKLI SEEDLAANDILDYKDDDDKV
Tag:	C-Myc/DDK
Purity:	> 80% as determined by SDS-PAGE and Coomassie blue staining
Concentration:	>0.05 µg/µL as determined by microplate BCA method
Labeling Method:	Labeled with [U- ¹³ C ₆ , ¹⁵ N ₄]-L-Arginine and [U- ¹³ C ₆ , ¹⁵ N ₂]-L-Lysine
Buffer:	25 mM Tris-HCl, 100 mM glycine, pH 7.3
Storage:	Store at -80°C. Avoid repeated freeze-thaw cycles.
Stability:	Stable for 3 months from receipt of products under proper storage and handling conditions.
RefSeq:	<u>NP_004559</u>
RefSeq Size:	1665
RefSeq ORF:	1128
Synonyms:	CAP; DFNB91; MSTP057; PI-6; PI6; PTI; SPI3
Locus ID:	5269



[View online »](#)

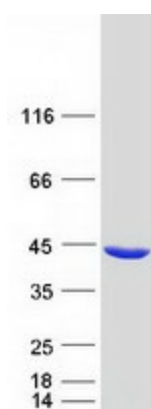
UniProt ID: [P35237](#), [A0A024QZX3](#)

Cytogenetics: 6p25.2

Summary: The protein encoded by this gene is a member of the serpin (serine proteinase inhibitor) superfamily, and ovalbumin(ov)-serpin subfamily. It was originally discovered as a placental thrombin inhibitor. The mouse homolog was found to be expressed in the hair cells of the inner ear. Mutations in this gene are associated with nonsyndromic progressive hearing loss, suggesting that this serpin plays an important role in the inner ear in the protection against leakage of lysosomal content during stress, and that loss of this protection results in cell death and sensorineural hearing loss. Alternatively spliced transcript variants have been found for this gene. [provided by RefSeq, Sep 2010]

Protein Families: Druggable Genome

Product images:



Coomassie blue staining of purified SERPINB6 protein (Cat# [TP300668]). The protein was produced from HEK293T cells transfected with SERPINB6 cDNA clone (Cat# [RC200668]) using MegaTran 2.0 (Cat# [TT210002]).