

## Product datasheet for PH300667

### FKBP1B (NM\_054033) Human Mass Spec Standard

#### Product data:

Product Type:	Mass Spec Standards
Description:	FKBP1B MS Standard C13 and N15-labeled recombinant protein (NP_473374)
Species:	Human
Expression Host:	HEK293
Expression cDNA Clone or AA Sequence:	RC200667
Predicted MW:	8.8 kDa
Protein Sequence:	>RC200667 protein sequence Red=Cloning site Green=Tags(s)  MGVEIETISPGDGRTFPKKGQTCVVHYTGMLQNGKKFDSSRDNRNPKFKFRIGKQEVIKGFEEGAAQLGPL SPLPICPHPC  TRTRPLEQKLISEEDLAANDILDYKDDDDKV
Tag:	C-Myc/DDK
Purity:	> 80% as determined by SDS-PAGE and Coomassie blue staining
Concentration:	>0.05 µg/µL as determined by microplate BCA method
Labeling Method:	Labeled with [U- 13C6, 15N4]-L-Arginine and [U- 13C6, 15N2]-L-Lysine
Buffer:	25 mM Tris-HCl, 100 mM glycine, pH 7.3
Storage:	Store at -80°C. Avoid repeated freeze-thaw cycles.
Stability:	Stable for 3 months from receipt of products under proper storage and handling conditions.
RefSeq:	<a href="#">NP_473374</a>
RefSeq Size:	1016
RefSeq ORF:	240
Synonyms:	FKBP1L; FKBP12.6; OTK4; PKBP1L; PPlase
Locus ID:	2281
UniProt ID:	<a href="#">P68106</a>
Cytogenetics:	2p23.3



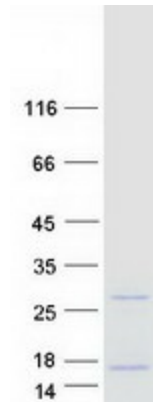
[View online »](#)

**Summary:**

The protein encoded by this gene is a member of the immunophilin protein family, which play a role in immunoregulation and basic cellular processes involving protein folding and trafficking. This encoded protein is a cis-trans prolyl isomerase that binds the immunosuppressants FK506 and rapamycin. It is highly similar to the FK506-binding protein 1A. Its physiological role is thought to be in excitation-contraction coupling in cardiac muscle. There are two alternatively spliced transcript variants of this gene encoding different isoforms. [provided by RefSeq, Jul 2008]

**Protein Families:**

Druggable Genome

**Product images:**

Coomassie blue staining of purified FKBP1B protein (Cat# [TP300667]). The protein was produced from HEK293T cells transfected with FKBP1B cDNA clone (Cat# [RC200667]) using MegaTran 2.0 (Cat# [TT210002]).