

Product datasheet for PH300658

Syntaxin 3 (STX3) (NM_004177) Human Mass Spec Standard

Product data:

Product Type:	Mass Spec Standards
Description:	STX3 MS Standard C13 and N15-labeled recombinant protein (NP_004168)
Species:	Human
Expression Host:	HEK293
Expression cDNA Clone or AA Sequence:	RC200658
Predicted MW:	33.2 kDa
Protein Sequence:	>RC200658 protein sequence Red=Cloning site Green=Tags(s)
	MKDRLEQLKAKQLTQDDDTDAVEIAIDNTAFMDEFFSEIEETRLNIDKISEHVVEEAKKLYSIILSAPIPE PKTKDDLEQLTTEIKKRANNVRNKLKSMKHIEEDEVRSADLRIRKSQHSVLSRKFFVEVMTKYNEAQVD FRERSKGRIQRQLEITGKKTDEELEEMLESGNPAIFTSGIIDSQISKQALSEIEGRHKDIVERLESSIKE LHDMFMDIAMLVENQGEMLDNIELNMHTVDHVEKARDETKKAVKYQSQARKKLIIIIIVLVVLLGILAL IIGLSVGLN
	TRTRPLEQKLISEEDLAANDILDYKDDDDKV
Tag:	C-Myc/DDK
Purity:	> 80% as determined by SDS-PAGE and Coomassie blue staining
Concentration:	>0.05 µg/µL as determined by microplate BCA method
Labeling Method:	Labeled with [U- ¹³ C ₆ , ¹⁵ N ₄]-L-Arginine and [U- ¹³ C ₆ , ¹⁵ N ₂]-L-Lysine
Buffer:	25 mM Tris-HCl, 100 mM glycine, pH 7.3
Storage:	Store at -80°C. Avoid repeated freeze-thaw cycles.
Stability:	Stable for 3 months from receipt of products under proper storage and handling conditions.
RefSeq:	NP_004168
RefSeq Size:	6498
RefSeq ORF:	867
Synonyms:	STX3A
Locus ID:	6809



[View online »](#)

UniProt ID: [Q13277](#), [Q53YE2](#)

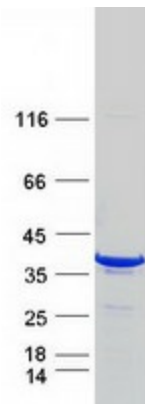
Cytogenetics: 11q12.1

Summary: The gene is a member of the syntaxin family. The encoded protein is targeted to the apical membrane of epithelial cells where it forms clusters and is important in establishing and maintaining polarity necessary for protein trafficking involving vesicle fusion and exocytosis. Alternative splicing results in multiple transcript variants. [provided by RefSeq, May 2010]

Protein Families: Druggable Genome, Stem cell - Pluripotency, Transmembrane

Protein Pathways: SNARE interactions in vesicular transport

Product images:



Coomassie blue staining of purified STX3 protein (Cat# [TP300658]). The protein was produced from HEK293T cells transfected with STX3 cDNA clone (Cat# [RC200658]) using MegaTran 2.0 (Cat# [TT210002]).