

Product datasheet for PH300651

PAX8 (NM_003466) Human Mass Spec Standard

Product data:

Product Type:	Mass Spec Standards
Description:	PAX8 MS Standard C13 and N15-labeled recombinant protein (NP_003457)
Species:	Human
Expression Host:	HEK293
Expression cDNA Clone or AA Sequence:	RC200651
Predicted MW:	48.2 kDa
Protein Sequence:	>RC200651 protein sequence Red=Cloning site Green=Tags(s)

MPHNSIRSGHGGLNQLGGAFVNGRPLPEVVRQRIVDLAHQGVRPCDISRQLRVSHGCVSKILGRYYETGS
IRPGVIGGSKPKVATPKVVEKIGDYKRQNPMTFAWEIRDRLLAEGVCDNDTVPSVSSINRIIRTKVQQPF
NLPMDSCVATKSLSPGHTLIPSSAVTPPEQPQSDSLGSTYSINGLLGIAQPGSDKRKMDSDQDSCRLSI
DSQSSSSGPRKHLRTDAFSQHHLEPLECFERQHYPEAYASPSHTKGEQGLYPLLLNSTLDDGKATLTP
SNTPLGRNLSTHQTYPPVADPHSPFAIKQETPEVSSSSSTPSSLSSSAFLDLQQVGSVPPFNAPPHAAS
VYGQFTGQALLSGREMGPTLPGYPPHIPTSGQGSYASSAIAGMVAGSEYSGNAYGHTPYSSYSEAWRFP
NSSLLSSPYYYSSTRPSAPPTTATAFDHL

TRTRPLEQKLISEEDLAANDILDYKDDDDKV

Tag:	C-Myc/DDK
Purity:	> 80% as determined by SDS-PAGE and Coomassie blue staining
Concentration:	>0.05 µg/µL as determined by microplate BCA method
Labeling Method:	Labeled with [U- ¹³ C ₆ , ¹⁵ N ₄]-L-Arginine and [U- ¹³ C ₆ , ¹⁵ N ₂]-L-Lysine
Buffer:	25 mM Tris-HCl, 100 mM glycine, pH 7.3
Storage:	Store at -80°C. Avoid repeated freeze-thaw cycles.
Stability:	Stable for 3 months from receipt of products under proper storage and handling conditions.
RefSeq:	<u>NP_003457</u>
RefSeq Size:	4065
RefSeq ORF:	1350
Locus ID:	7849



[View online »](#)

UniProt ID: [Q06710](#), [R9W7C9](#)

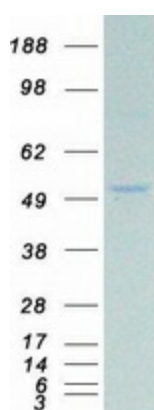
Cytogenetics: 2q14.1

Summary: This gene encodes a member of the paired box (PAX) family of transcription factors. Members of this gene family typically encode proteins that contain a paired box domain, an octapeptide, and a paired-type homeodomain. This nuclear protein is involved in thyroid follicular cell development and expression of thyroid-specific genes. Mutations in this gene have been associated with thyroid dysgenesis, thyroid follicular carcinomas and atypical follicular thyroid adenomas. Alternatively spliced transcript variants encoding different isoforms have been described. [provided by RefSeq, Mar 2010]

Protein Families: Druggable Genome, Transcription Factors

Protein Pathways: Pathways in cancer, Thyroid cancer

Product images:



Coomassie blue staining of purified PAX8 protein (Cat# [TP300651]). The protein was produced from HEK293T cells transfected with PAX8 cDNA clone (Cat# [RC200651]) using MegaTran 2.0 (Cat# [TT210002]).