

Product datasheet for PH300631

ESE1 (ELF3) (NM_004433) Human Mass Spec Standard

Product data:

Product Type:	Mass Spec Standards
Description:	ELF3 MS Standard C13 and N15-labeled recombinant protein (NP_004424)
Species:	Human
Expression Host:	HEK293
Expression cDNA Clone or AA Sequence:	RC200631
Predicted MW:	41.5 kDa
Protein Sequence:	>RC200631 protein sequence Red=Cloning site Green=Tags(s) MAATCEISNIFSNYFSAMYSSDSTLASVPPAATFGADDLVLTLNPPQMSLEGTEKASWLGEQPQFWSKT QVLDWISYQVEKNKYDASAIIDFRCMDMGATLNCAL EELRLVFGPLGDQLHAQLRDLTSSSSDEL SWII ELLEKDGMAFQEALDPGPFQGSPPFAQELLDDGQQASPYHPGSCGAGAPSPGSSDVSTAGTGASRSSHSS DSGGSDVDLDPTDGKLFPSDGF RDCKKGD PKHGKRGRPRKLSKEYWDCLEGGKSKHAPRGTHLWEFIR DILIHPELNEGLMKWENRHEGVFKFLRSEAVAQLWGQKKKNSNMTYEKLSRAMRYYYKREILERVDGRRL VYKFGKNSSGWKEEEVLQSRN TRTRPLEQKLI SEEDLAANDILDYKDDDDKV
Tag:	C-Myc/DDK
Purity:	> 80% as determined by SDS-PAGE and Coomassie blue staining
Concentration:	>0.05 µg/µL as determined by microplate BCA method
Labeling Method:	Labeled with [U- ¹³ C ₆ , ¹⁵ N ₄]-L-Arginine and [U- ¹³ C ₆ , ¹⁵ N ₂]-L-Lysine
Buffer:	25 mM Tris-HCl, 100 mM glycine, pH 7.3
Storage:	Store at -80°C. Avoid repeated freeze-thaw cycles.
Stability:	Stable for 3 months from receipt of products under proper storage and handling conditions.
RefSeq:	NP_004424
RefSeq Size:	3149
RefSeq ORF:	1113
Synonyms:	EPR-1; ERT; ESE-1; ESX
Locus ID:	1999



[View online »](#)

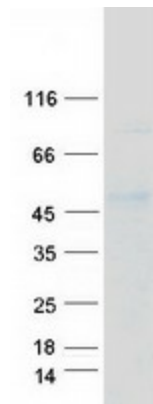
UniProt ID: [P78545](#), [A0A024R974](#)

Cytogenetics: 1q32.1

Summary: Transcriptional activator that binds and transactivates ETS sequences containing the consensus nucleotide core sequence GGA[AT]. Acts synergistically with POU2F3 to transactivate the SPRR2A promoter and with RUNX1 to transactivate the ANGPT1 promoter. Also transactivates collagenase, CCL20, CLND7, FLG, KRT8, NOS2, PTGS2, SPRR2B, TGFBR2 and TGM3 promoters. Represses KRT4 promoter activity. Involved in mediating vascular inflammation. May play an important role in epithelial cell differentiation and tumorigenesis. May be a critical downstream effector of the ERBB2 signaling pathway. May be associated with mammary gland development and involution. Plays an important role in the regulation of transcription with TATA-less promoters in preimplantation embryos, which is essential in preimplantation development (By similarity).[UniProtKB/Swiss-Prot Function]

Protein Families: Transcription Factors

Product images:



Coomassie blue staining of purified ELF3 protein (Cat# [TP300631]). The protein was produced from HEK293T cells transfected with ELF3 cDNA clone (Cat# [RC200631]) using MegaTran 2.0 (Cat# [TT210002]).