

## Product datasheet for PH300630

### NCBP1 (NM\_002486) Human Mass Spec Standard

#### Product data:

Product Type:	Mass Spec Standards
Description:	NCBP1 MS Standard C13 and N15-labeled recombinant protein (NP_002477)
Species:	Human
Expression Host:	HEK293
Expression cDNA Clone or AA Sequence:	RC200630
Predicted MW:	91.8 kDa
Protein Sequence:	>RC200630 protein sequence Red=Cloning site Green=Tags(s)

MSRRRHSDENDGGQPHKRRKTS DANETEDHLESLICKVGEKSACSLESNLEGLAGVLEADLPNYKSKILR  
LLCTVARLLPEKLTIIYTTLVGLLNARNYNFGGEFVEAMIRQLKESLKANNYNEAVYLVRFSDLVNCHVI  
AAPSMVAMFENFVSVTQEEDVPQVRRDWYVYAFSSLPWVGKELYEKKAEMDRIFANTESYLKRRQKTH  
VPMLQVWTADKPHPQEEYLDCLWAQIQKLLKDRWQERHILRPYLAFDLCEALQHNLPPTPPPHTEDS  
VYPMPRVIFRMFDYTDDEPGVMPGSHSVERFVIEENLHCIIKSHWKERTCAAQLVSYPGKNKIPLNYH  
IVEVIFAELFQLPAPPIDVMTLLIELCKLQPGSLPQVLAQATEMLYMLDMMNTTCVDRFINWFSHH  
LSNFQFRWSWEDWSDCLSQDPESPKPKFVREVLEKCMRLSYHQRIILDIVPPTFSALCPANPTCIYKYGDE  
SSNSLPGHSVALCLAVAFKSKATNDEIFSILKDVNPNQDDDDDEGFSFNPLKIEVFVQTLHLAAKSFS  
HSFSALAKFHEVFKTLAESDEGLHVLVRFVWRNHPQMIAVLVDMIRITQIVDCAAVANWIFSELSSR  
DFTRLFVWEILHSTIRKMNKHLVKIQKELEEAKEKLARQHKRRSDDDRSSDRKDGVLVEEQIERLQEKVE  
SAQSEQKNLFLVIFQRFIMILTEHLVRCETDGTSVLTPWYKNCIERLQQIFLQHHQIIQQYMTLENLLF  
TAEIDPHILAVFQQFCALQA

TRTRPLEQKLI SEEDLAANDILDYKDDDDKV

Tag:	C-Myc/DDK
Purity:	> 80% as determined by SDS-PAGE and Coomassie blue staining
Concentration:	>0.05 µg/µL as determined by microplate BCA method
Labeling Method:	Labeled with [U- <sup>13</sup> C <sub>6</sub> , <sup>15</sup> N <sub>4</sub> ]-L-Arginine and [U- <sup>13</sup> C <sub>6</sub> , <sup>15</sup> N <sub>2</sub> ]-L-Lysine
Buffer:	25 mM Tris-HCl, 100 mM glycine, pH 7.3
Storage:	Store at -80°C. Avoid repeated freeze-thaw cycles.
Stability:	Stable for 3 months from receipt of products under proper storage and handling conditions.
RefSeq:	<a href="#">NP_002477</a>



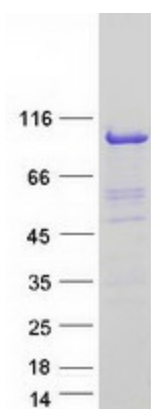
[View online >](#)

RefSeq Size: 5381  
RefSeq ORF: 2370  
Synonyms: CBP80; NCBP; Sto1  
Locus ID: 4686  
UniProt ID: [Q09161](#), [A0A024R179](#)  
Cytogenetics: 9q22.33

**Summary:** The product of this gene is a component of the nuclear cap-binding protein complex (CBC), which binds to the monomethylated 5' cap of nascent pre-mRNA in the nucleoplasm. The encoded protein promotes high-affinity mRNA-cap binding and associates with the CTD of RNA polymerase II. The CBC promotes pre-mRNA splicing, 3'-end processing, RNA nuclear export, and nonsense-mediated mRNA decay. [provided by RefSeq, Jul 2008]

**Protein Pathways:** Spliceosome

### Product images:



Coomassie blue staining of purified NCBP1 protein (Cat# [TP300630]). The protein was produced from HEK293T cells transfected with NCBP1 cDNA clone (Cat# [RC200630]) using MegaTran 2.0 (Cat# [TT210002]).