

Product datasheet for PH300625

BCAT2 (NM_001190) Human Mass Spec Standard

Product data:

| | |
|---------------------------------------|---|
| Product Type: | Mass Spec Standards |
| Description: | BCAT2 MS Standard C13 and N15-labeled recombinant protein (NP_001181) |
| Species: | Human |
| Expression Host: | HEK293 |
| Expression cDNA Clone or AA Sequence: | RC200625 |
| Predicted MW: | 44.3 kDa |
| Protein Sequence: | >RC200625 protein sequence Red=Cloning site Green=Tags(s) |

MAAAALGQIWARKLLSVPWLLCGPRRYASSSFKAADLQLEMTQKPHKKPGPEPLVFGKTFDTHMLMVEW
NDKGWGQPRIQPFQNLTLHPASSSLHYSLQLFEGMKAFKGDQQVRLFRPWLNMDRMLRSAMRLCLPSFD
KLELLECIIRRLIEVDKDWVDAAGTSLYVRPVLIGNEPSLGVSQPTRALLFVILCPVGAYFPGGSVTPVS
LLADPAFIRAWGGVGNKYLGGNYGPTVLVQQEALKRGCEQVLWLYGPDHQLTEVGTMNIFFVYTHEDGV
LELVTPPLNGVILPGVVRQSLLDMAQTWGEFRVVERTITMKQLLRAL EEGRVREVFSGGTACQVCPVHRI
LYKDRNLHIPTMENGPELILRFQKELKEIQYGIRAHWMMFPV

TRTRPLEQKLI SEEDLAANDILDYKDDDDKV

| | |
|------------------|--|
| Tag: | C-Myc/DDK |
| Purity: | > 80% as determined by SDS-PAGE and Coomassie blue staining |
| Concentration: | >0.05 µg/µL as determined by microplate BCA method |
| Labeling Method: | Labeled with [U- ¹³ C ₆ , ¹⁵ N ₄]-L-Arginine and [U- ¹³ C ₆ , ¹⁵ N ₂]-L-Lysine |
| Buffer: | 25 mM Tris-HCl, 100 mM glycine, pH 7.3 |
| Storage: | Store at -80°C. Avoid repeated freeze-thaw cycles. |
| Stability: | Stable for 3 months from receipt of products under proper storage and handling conditions. |
| RefSeq: | <u>NP_001181</u> |
| RefSeq Size: | 1616 |
| RefSeq ORF: | 1176 |
| Synonyms: | BCAM; BCATM; BCT2; HVLI; PP18 |
| Locus ID: | 587 |



[View online »](#)

UniProt ID: [O15382](#)

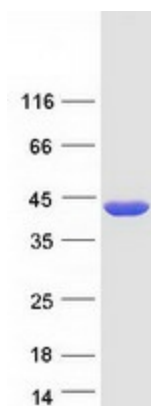
Cytogenetics: 19q13.33

Summary: This gene encodes a branched chain aminotransferase found in mitochondria. The encoded protein forms a dimer that catalyzes the first step in the production of the branched chain amino acids leucine, isoleucine, and valine. Multiple transcript variants encoding different isoforms have been found for this gene. [provided by RefSeq, Sep 2009]

Protein Families: Druggable Genome

Protein Pathways: Metabolic pathways, Pantothenate and CoA biosynthesis, Valine, leucine and isoleucine biosynthesis, Valine, leucine and isoleucine degradation

Product images:



Coomassie blue staining of purified BCAT2 protein (Cat# [TP300625]). The protein was produced from HEK293T cells transfected with BCAT2 cDNA clone (Cat# [RC200625]) using MegaTran 2.0 (Cat# [TT210002]).