

Product datasheet for PH300606

SAPK4 (MAPK13) (NM_002754) Human Mass Spec Standard

Product data:

Product Type:	Mass Spec Standards
Description:	MAPK13 MS Standard C13 and N15-labeled recombinant protein (NP_002745)
Species:	Human
Expression Host:	HEK293
Expression cDNA Clone or AA Sequence:	RC200606
Predicted MW:	42.1 kDa
Protein Sequence:	>RC200606 protein sequence Red =Cloning site Green =Tags(s)

MSLIRKKGFYKQDVNKTAWELPKTYVSPTHVGSAGYGSVCASIDKRSGEKVAIKKLSRPFQSEIFAKRAY
 RELLLLKHMQHENVIGLLDVFTPASSLRNFYDFYLVMPFMQTDLQKIMGMEFSEEKIQYL VYQMLKGLKY
 IHSAGVVHRDLKPGNLAVNEDCELIKILDFGLARHADAEMTGYYVTRWYRAPEVILSWMHYNQTVDIWSVG
 CIMAEMLTGKTLFKGKDYLDQLTQILKVTGVPGETFVQKLNDKAAKSYIQSLPQTTPRKDFTQLFPRASPQ
 AADLLEKMLELDVDKRLTAAQALTHPFFEPFRDPEEETEAQQPFDDSLHEKLTVDWKQHIYKEIVNFS
 PIARKDSRRRSGMKL

TRTRPLEQKLISEEDLAANDILDYKDDDDKV

Tag:	C-Myc/DDK
Purity:	> 80% as determined by SDS-PAGE and Coomassie blue staining
Concentration:	>0.05 µg/µL as determined by microplate BCA method
Labeling Method:	Labeled with [U- ¹³ C ₆ , ¹⁵ N ₄]-L-Arginine and [U- ¹³ C ₆ , ¹⁵ N ₂]-L-Lysine
Buffer:	25 mM Tris-HCl, 100 mM glycine, pH 7.3
Storage:	Store at -80°C. Avoid repeated freeze-thaw cycles.
Stability:	Stable for 3 months from receipt of products under proper storage and handling conditions.
RefSeq:	<u>NP_002745</u>
RefSeq Size:	6348
RefSeq ORF:	1095
Synonyms:	MAPK-13; MAPK 13; p38delta; PRKM13; SAPK4
Locus ID:	5603


[View online »](#)

UniProt ID: O15264, A0A024RD04

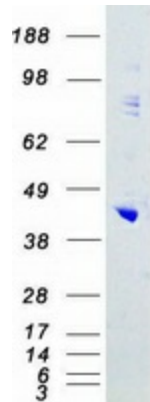
Cytogenetics: 6p21.31

Summary: This gene encodes a member of the mitogen-activated protein (MAP) kinase family. MAP kinases act as an integration point for multiple biochemical signals, and are involved in a wide variety of cellular processes such as proliferation, differentiation, transcription regulation and development. The encoded protein is a p38 MAP kinase and is activated by proinflammatory cytokines and cellular stress. Substrates of the encoded protein include the transcription factor ATF2 and the microtubule dynamics regulator stathmin. Alternatively spliced transcript variants have been observed for this gene. [provided by RefSeq, Jul 2012]

Protein Families: Druggable Genome, Protein Kinase

Protein Pathways: Amyotrophic lateral sclerosis (ALS), Epithelial cell signaling in Helicobacter pylori infection, Fc epsilon RI signaling pathway, GnRH signaling pathway, Leukocyte transendothelial migration, MAPK signaling pathway, Neurotrophin signaling pathway, NOD-like receptor signaling pathway, Progesterone-mediated oocyte maturation, RIG-I-like receptor signaling pathway, T cell receptor signaling pathway, Toll-like receptor signaling pathway, VEGF signaling pathway

Product images:



Coomassie blue staining of purified MAPK13 protein (Cat# [TP300606]). The protein was produced from HEK293T cells transfected with MAPK13 cDNA clone (Cat# [RC200606]) using MegaTran 2.0 (Cat# [TT210002]).