

Product datasheet for PH300602

TRAPPC3 (NM_014408) Human Mass Spec Standard

Product data:

Product Type:	Mass Spec Standards
Description:	TRAPPC3 MS Standard C13 and N15-labeled recombinant protein (NP_055223)
Species:	Human
Expression Host:	HEK293
Expression cDNA Clone or AA Sequence:	RC200602
Predicted MW:	20.3 kDa
Protein Sequence:	>RC200602 protein sequence Red=Cloning site Green=Tags(s) MSRQANRGTESKKMSSELF TLTYGALVTQLCKDYENDE VNKQLDKMGFNIGVRLIEDFLARSNVGRCHD FRETADVI AKVAFKMYLGITPSITN WSPAGDEFSLILENNPLVDFVELPDNHSSLIYSNLLCGVLRGALE MVQMAVEAKFVQDTLKG DGVTEIRMRFIRRIEDN LPAGEE TRTRPLEQKLI SEEDLAANDILDYKDDDDK V
Tag:	C-Myc/DDK
Purity:	> 80% as determined by SDS-PAGE and Coomassie blue staining
Concentration:	>0.05 µg/µL as determined by microplate BCA method
Labeling Method:	Labeled with [U- 13C6, 15N4]-L-Arginine and [U- 13C6, 15N2]-L-Lysine
Buffer:	25 mM Tris-HCl, 100 mM glycine, pH 7.3
Storage:	Store at -80°C. Avoid repeated freeze-thaw cycles.
Stability:	Stable for 3 months from receipt of products under proper storage and handling conditions.
RefSeq:	<u>NP_055223</u>
RefSeq Size:	1333
RefSeq ORF:	540
Synonyms:	BET3
Locus ID:	27095
UniProt ID:	<u>O43617</u>

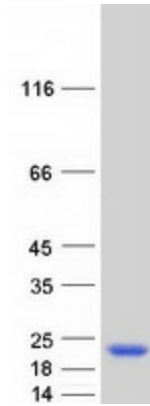


[View online »](#)

Cytogenetics: 1p34.3

Summary: This gene encodes a component of the trafficking protein particle complex, which tethers transport vesicles to the cis-Golgi membrane. The encoded protein participates in the regulation of transport from the endoplasmic reticulum to the Golgi apparatus. Alternative splicing results in multiple transcript variants. [provided by RefSeq, Aug 2012]

Product images:



Coomassie blue staining of purified TRAPPC3 protein (Cat# [TP300602]). The protein was produced from HEK293T cells transfected with TRAPPC3 cDNA clone (Cat# [RC200602]) using MegaTran 2.0 (Cat# [TT210002]).