

Product datasheet for PH300589

Calumenin (CALU) (NM_001219) Human Mass Spec Standard

Product data:

Product Type:	Mass Spec Standards
Description:	CALU MS Standard C13 and N15-labeled recombinant protein (NP_001210)
Species:	Human
Expression Host:	HEK293
Expression cDNA Clone or AA Sequence:	RC200589
Predicted MW:	37.1 kDa
Protein Sequence:	>RC200589 protein sequence Red=Cloning site Green=Tags(s) MDLRQFLMCLSLCTAFALSKPTEKKDRVHHEPQLSDKVHNDASQSFYDHDHAF LGAEAEAKTFDQLTPPEESK ERLGKIVSKIDGDKDGFVTVDLKDVIKFAQKRWIYEDVERQWKGHDLNEDGLVSWEEYKNATYGYVLDD PDPDDGFNYKQMMVRDERRFKMADKDGDLIATKEEFTAF LHPEEYDYMKDIVVQETMEDIDKNADGFIDL EEYIGDMYSHDGNTDEPEWKTEREQFVEFRDKNRDGKMDKEETKDWILPSDYDHAEAEARHLVYESDQN KDGKLTKEEIVDKYDLFVGSQATDFGEALVRHDEF TRTRPLEQKLI SEEDLAANDILDYKDDDDKV
Tag:	C-Myc/DDK
Purity:	> 80% as determined by SDS-PAGE and Coomassie blue staining
Concentration:	>0.05 µg/µL as determined by microplate BCA method
Labeling Method:	Labeled with [U- ¹³ C ₆ , ¹⁵ N ₄]-L-Arginine and [U- ¹³ C ₆ , ¹⁵ N ₂]-L-Lysine
Buffer:	25 mM Tris-HCl, 100 mM glycine, pH 7.3
Storage:	Store at -80°C. Avoid repeated freeze-thaw cycles.
Stability:	Stable for 3 months from receipt of products under proper storage and handling conditions.
RefSeq:	<u>NP_001210</u>
RefSeq Size:	5366
RefSeq ORF:	945
Locus ID:	813
UniProt ID:	<u>O43852</u> , <u>Q6IAW5</u> , <u>B3KQF5</u> , <u>D6QS48</u>



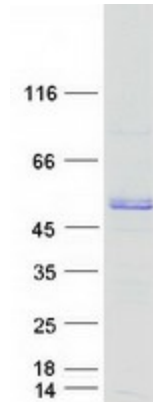
[View online »](#)

Cytogenetics: 7q32.1

Summary: The product of this gene is a calcium-binding protein localized in the endoplasmic reticulum (ER) and it is involved in such ER functions as protein folding and sorting. This protein belongs to a family of multiple EF-hand proteins (CERC) that include reticulocalbin, ERC-55, and Cab45 and the product of this gene. Alternatively spliced transcript variants encoding different isoforms have been identified. [provided by RefSeq, Oct 2008]

Protein Families: Secreted Protein

Product images:



Coomassie blue staining of purified CALU protein (Cat# [TP300589]). The protein was produced from HEK293T cells transfected with CALU cDNA clone (Cat# [RC200589]) using MegaTran 2.0 (Cat# [TT210002]).