

## Product datasheet for PH300573

### PAN2 (NM\_014871) Human Mass Spec Standard

#### Product data:

|                                       |  |
|---------------------------------------|--|
| Product Type:                         | Mass Spec Standards  |
| Description:                          | PAN2 MS Standard C13 and N15-labeled recombinant protein (NP_055686) |
| Species:                              | Human  |
| Expression Host:                      | HEK293   |
| Expression cDNA Clone or AA Sequence: | RC200573   |
| Predicted MW:                         | 135 kDa  |
| Protein Sequence:                     | >RC200573 protein sequence<br>Red=Cloning site Green=Tags(s)         |

MNFEGLDPGLAEYAPAMHSALDPVLD AHLNPNLLQNVLDPEGVLEALPVQESVHIMEGVYSELHSVVA  
EVGVPVSVSHFDLHEEMLWVGSHGGHATSFFG PALERYSSFQVNGSDDIRQIQSLENGILFLTKNNLKYM  
ARGGLIIFDYLLDENEDMHSLLL TDSSTLLVGGLQNHILEIDLNTVQETQKYAVETPGVTIMRQTNRFFF  
CGHTSGKVSRLDLRTFKVEHEFDASGSLSDFDVHG NLLAACGSSRLTGLACDRFLKVVYDLRMMRAITP  
LQVHVDPAFLRFIPTYTSRLAIIISQSGQCQCEPTGLANPADIFHVNPVGPLLMTFDVSASKQALAFGDS  
EGCVHLWTDSPPEFSFPYSRETEFALPCLVDSL PPLDWSQDLLPLSLIPVPLTTDTLLSDWPAANSAPAP  
RRAPPVDAEILRTMKKVGFIGYAPNPRTRLRNQIPYRLKESDSEFDSFSQVTESPVGREEEPHLMVSKK  
YRKVTIKYSKLGLDFDFKHYNKTLFAGLEPHIPNAYCNCMIQVLYFLEPVRC LIQNHL CQKEFCLACEL  
GFLFHMLDL SRGDPCQGNFLRAFRTIPEASALGLILADSDEASGKGNLARLIQRWNRILTQLHQDMQE  
LEIPQAYRGAGGSSFCSSGDSVIGQLFSCMEMENCSLCRCGSETVRASSTLLFTLSYPDDKTGKNYDFAQV  
LKRSICLDQNTQAWCDTCEKYQPTIQRNIRHLPDILVINCEVNSSKEADFWRMQAEVAFKMAVKKHGGE  
ISKNEFALADWKELGSPEGVLVCP SIEELKNVWLPFSIRMKMTKNKGLDVCNWDGDEMOWGPARAE EEE  
HGYYVYDLMATVVHILDSRTGGSLVAHIKVG ETYHQKEGVTHQQWYLFNDFLIEPIDKHEAVQFDMNWK  
VPAILYYVKNRNLNSRYNLNIKNP IEASVLLAEASLARKQRKTHTTFIPLMLNEMPQIGDLVGLDAEFVTL  
NEEEAELRSDGKSTIKPSQMSVARITCVRGQGPNEGIPFIDDYISTQEQQVVDYLTQYSGIKPGDLDAKI  
SSKHLTTLKSTYLKLRFLIDIGVKFVGHGLQKDFRVINLMV PKDQVLDTVYLFHMPRKRMISLRLAWYF  
LDLKIQGETHDSIEDARTALQLYRKYLELSKNGTEPESFHKVLKGLYEKGRKMDWKVPEPEGQTS PKNA  
VFSSVLAL

TRTRPLEQKLI SEEDLAANDILDYKDDDDKV

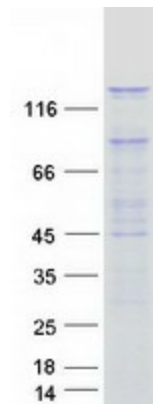
|                  |  |
|------------------|--|
| Tag:             | C-Myc/DDK  |
| Purity:          | > 80% as determined by SDS-PAGE and Coomassie blue staining  |
| Concentration:   | >0.05 µg/µL as determined by microplate BCA method   |
| Labeling Method: | Labeled with [U- <sup>13</sup> C <sub>6</sub> , <sup>15</sup> N <sub>4</sub> ]-L-Arginine and [U- <sup>13</sup> C <sub>6</sub> , <sup>15</sup> N <sub>2</sub> ]-L-Lysine |



[View online »](#)

|                   |   |
|-------------------|---|
| Buffer:           | 25 mM Tris-HCl, 100 mM glycine, pH 7.3  |
| Storage:          | Store at -80°C. Avoid repeated freeze-thaw cycles.  |
| Stability:        | Stable for 3 months from receipt of products under proper storage and handling conditions.  |
| RefSeq:           | <a href="#">NP_055686</a>   |
| RefSeq Size:      | 5289  |
| RefSeq ORF:       | 3594  |
| Synonyms:         | USP52   |
| Locus ID:         | 9924  |
| UniProt ID:       | <a href="#">Q504Q3</a>  |
| Cytogenetics:     | 12q13.3   |
| Summary:          | This gene encodes a deadenylase that functions as the catalytic subunit of the polyadenylate binding protein dependent poly(A) nuclease complex. The encoded protein is a magnesium dependent 3' to 5' exoribonuclease that is involved in the degradation of cytoplasmic mRNAs. Alternate splicing results in multiple transcript variants. [provided by RefSeq, Oct 2009] |
| Protein Families: | Protease  |

### Product images:



Coomassie blue staining of purified PAN2 protein (Cat# [TP300573]). The protein was produced from HEK293T cells transfected with PAN2 cDNA clone (Cat# [RC200573]) using MegaTran 2.0 (Cat# [TT210002]).