

## Product datasheet for PH300555

### CRTAP (NM\_006371) Human Mass Spec Standard

#### Product data:

Product Type:	Mass Spec Standards
Description:	CRTAP MS Standard C13 and N15-labeled recombinant protein (NP_006362)
Species:	Human
Expression Host:	HEK293
Expression cDNA Clone or AA Sequence:	RC200555
Predicted MW:	46.5 kDa
Protein Sequence:	>RC200555 protein sequence Red=Cloning site Green=Tags(s)
	MEPGRRGAAALLALLCVACALRAGRAQYERYSFRRPRDELMPLSAYRHALDKYSGEHWAESVGYLEIS LRLHRLLRDSEAFCHRNC SAAPQPEPAAGLASYPELRLFGGLLRRAHCLKRCKQGLPAFRQSQPSRDVLA DFQRREPYKFLQFAYFKANNLPKAIAAAHTFLLKHPDDEMKNMAYYKSLPGAEDYIKDLETKSYESLF IRAVRAYNGENWRTSITDMELALPDFFKAFYECLAACEGSREIKDFKDFYLSIADHYVEVLECKIQCEEN LTPVIGGYPVEKVFATMYHYLQFAYYKLNLDKNAAPCAVSYLLFDQNDKVMQQNL VYYQYHRDTWGLSDE HFQPRPEAVQFFNVTTLQKELYDFAKENIMDDDEGEVVEYVDDLLELEETS
	TRTRPLEQKLI SEEDLAANDILDYKDDDDKV
Tag:	C-Myc/DDK
Purity:	> 80% as determined by SDS-PAGE and Coomassie blue staining
Concentration:	>0.05 µg/µL as determined by microplate BCA method
Labeling Method:	Labeled with [U- <sup>13</sup> C <sub>6</sub> , <sup>15</sup> N <sub>4</sub> ]-L-Arginine and [U- <sup>13</sup> C <sub>6</sub> , <sup>15</sup> N <sub>2</sub> ]-L-Lysine
Buffer:	25 mM Tris-HCl, 100 mM glycine, pH 7.3
Storage:	Store at -80°C. Avoid repeated freeze-thaw cycles.
Stability:	Stable for 3 months from receipt of products under proper storage and handling conditions.
RefSeq:	<a href="#">NP_006362</a>
RefSeq Size:	6668
RefSeq ORF:	1203
Synonyms:	CASP; LEPREL3; OI7; P3H5
Locus ID:	10491



[View online »](#)

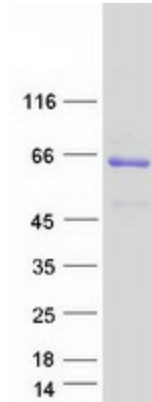
UniProt ID: [O75718](#)

Cytogenetics: 3p22.3

**Summary:** The protein encoded by this gene is similar to the chicken and mouse CRTAP genes. The encoded protein is a scaffolding protein that may influence the activity of at least one member of the cytohesin/ARNO family in response to specific cellular stimuli. Defects in this gene are associated with osteogenesis imperfecta, a connective tissue disorder characterized by bone fragility and low bone mass. [provided by RefSeq, Jul 2008]

**Protein Families:** Secreted Protein, Transmembrane

### Product images:



Coomassie blue staining of purified CRTAP protein (Cat# [TP300555]). The protein was produced from HEK293T cells transfected with CRTAP cDNA clone (Cat# [RC200555]) using MegaTran 2.0 (Cat# [TT210002]).