

Product datasheet for PH300545

RER1 (NM_007033) Human Mass Spec Standard

Product data:

Product Type:	Mass Spec Standards
Description:	RER1 MS Standard C13 and N15-labeled recombinant protein (NP_008964)
Species:	Human
Expression Host:	HEK293
Expression cDNA Clone or AA Sequence:	RC200545
Predicted MW:	23 kDa
Protein Sequence:	>RC200545 protein sequence Red=Cloning site Green=Tags(s) MSEGDSVGESVHGKPSVVYRFFTRLGQIYQSWLDKSTPYTAVRWVVTLGLSFVYMIRVYLLQGWIYVITYA LGIYHLNLFIAFLSPKVDPPLMEDSDDGPSLPTKQNEEFRPFIRRLPEFKFWHAATKGILVAMVCTFFDA FNVPVFWPILVMYFIMLFCITMKRQIKHMIKYRYIPFTHGKRRYRGKEDAGKAFAS TRTRPLEQKLISEEDLAANDILDYKDDDDKV
Tag:	C-Myc/DDK
Purity:	> 80% as determined by SDS-PAGE and Coomassie blue staining
Concentration:	>0.05 µg/µL as determined by microplate BCA method
Labeling Method:	Labeled with [U- 13C6, 15N4]-L-Arginine and [U- 13C6, 15N2]-L-Lysine
Buffer:	25 mM Tris-HCl, 100 mM glycine, pH 7.3
Storage:	Store at -80°C. Avoid repeated freeze-thaw cycles.
Stability:	Stable for 3 months from receipt of products under proper storage and handling conditions.
RefSeq:	NP_008964
RefSeq Size:	3118
RefSeq ORF:	462
Locus ID:	11079
UniProt ID:	O15258 , Q5T094
Cytogenetics:	1p36.32

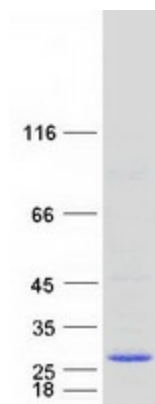


[View online »](#)

Summary: The protein encoded by this gene is a multi-pass membrane protein that is localized to the golgi apparatus. It is involved in the retention of endoplasmic reticulum (ER) membrane proteins in the ER and retrieval of ER membrane proteins from the early Golgi compartment to facilitate gamma-secretase complex assembly. [provided by RefSeq, Oct 2009]

Protein Families: Transmembrane

Product images:



Coomassie blue staining of purified RER1 protein (Cat# [TP300545]). The protein was produced from HEK293T cells transfected with RER1 cDNA clone (Cat# [RC200545]) using MegaTran 2.0 (Cat# [TT210002]).