

## Product datasheet for PH300543

### LDOC1 (NM\_012317) Human Mass Spec Standard

#### Product data:

Product Type:	Mass Spec Standards
Description:	LDOC1 MS Standard C13 and N15-labeled recombinant protein (NP_036449)
Species:	Human
Expression Host:	HEK293
Expression cDNA Clone or AA Sequence:	RC200543
Predicted MW:	17 kDa
Protein Sequence:	>RC200543 protein sequence Red=Cloning site Green=Tags(s)  MVDELVLLLHALLMRHRALSIENSQLMQLRLLVCERASLLRQVRPPSCPVPFPETFNCESSRLPEFIVQ TASYMLVNENRFCNDAMKVAFLISLLTGEAEWVVPYIEMDSPILGDYRAFLDEMKQCFGWDDDEDDDDDE EEEDDY  TRTRPLEQKLI SEEDLAANDILDYKDDDDKV
Tag:	C-Myc/DDK
Purity:	> 80% as determined by SDS-PAGE and Coomassie blue staining
Concentration:	>0.05 µg/µL as determined by microplate BCA method
Labeling Method:	Labeled with [U- 13C6, 15N4]-L-Arginine and [U- 13C6, 15N2]-L-Lysine
Buffer:	25 mM Tris-HCl, 100 mM glycine, pH 7.3
Storage:	Store at -80°C. Avoid repeated freeze-thaw cycles.
Stability:	Stable for 3 months from receipt of products under proper storage and handling conditions.
RefSeq:	<a href="#">NP_036449</a>
RefSeq Size:	1470
RefSeq ORF:	438
Synonyms:	BCUR1; Mar7; Mart7; RTL7; SIRH7
Locus ID:	23641
UniProt ID:	<a href="#">O95751</a>

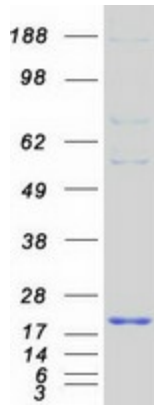


[View online »](#)

**Cytogenetics:** Xq27.1

**Summary:** The protein encoded by this gene contains a leucine zipper-like motif and a proline-rich region that shares marked similarity with an SH3-binding domain. The protein localizes to the nucleus and is down-regulated in some cancer cell lines. It is thought to regulate the transcriptional response mediated by the nuclear factor kappa B (NF-kappaB). The gene has been proposed as a tumor suppressor gene whose protein product may have an important role in the development and/or progression of some cancers. [provided by RefSeq, Jul 2008]

**Product images:**



Coomassie blue staining of purified LDOC1 protein (Cat# [TP300543]). The protein was produced from HEK293T cells transfected with LDOC1 cDNA clone (Cat# [RC200543]) using MegaTran 2.0 (Cat# [TT210002]).