

## Product datasheet for PH300537

### Stanniocalcin 2 (STC2) (NM\_003714) Human Mass Spec Standard

#### Product data:

Product Type:	Mass Spec Standards
Description:	STC2 MS Standard C13 and N15-labeled recombinant protein (NP_003705)
Species:	Human
Expression Host:	HEK293
Expression cDNA Clone or AA Sequence:	RC200537
Predicted MW:	33.2 kDa
Protein Sequence:	>RC200537 protein sequence Red=Cloning site Green=Tags(s)
	MCAERLGQFMTLALVLATFDPARGTDATNPPEGPQDRSSQKGRSLQNTAEIQHCLVNAGDVGCVFEC FENNSCEIRGLHGICMTFLHNAGKFDAQKSFIKDALKCKAHALRHRFGCISRKCPAIREMVSQLORECY LKHDLCAAAQENTRIVIVEMIHFKDLLLHEPYVDLVNLLTCGEEVKEAITHSVQVQCEQNWGSLCSILSF CTSAIQKPPTAPPERQPQVDRTKLSRAHHGEAGHHLPEPSSRETGRGAKGERGSKSHPNAHARGRVGGLG AQGPSGSSEWEDEQSEYSDIRR
	TRTRPLEQKLISEEDLAANDILDYKDDDDKV
Tag:	C-Myc/DDK
Purity:	> 80% as determined by SDS-PAGE and Coomassie blue staining
Concentration:	>0.05 µg/µL as determined by microplate BCA method
Labeling Method:	Labeled with [U- <sup>13</sup> C <sub>6</sub> , <sup>15</sup> N <sub>4</sub> ]-L-Arginine and [U- <sup>13</sup> C <sub>6</sub> , <sup>15</sup> N <sub>2</sub> ]-L-Lysine
Buffer:	25 mM Tris-HCl, 100 mM glycine, pH 7.3
Storage:	Store at -80°C. Avoid repeated freeze-thaw cycles.
Stability:	Stable for 3 months from receipt of products under proper storage and handling conditions.
RefSeq:	<a href="#">NP_003705</a>
RefSeq Size:	5361
RefSeq ORF:	906
Synonyms:	STC-2; STCRP
Locus ID:	8614



[View online »](#)

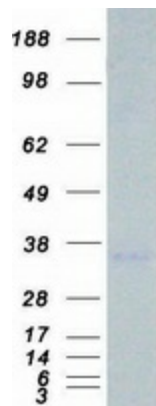
UniProt ID: [O76061](#), [Q6FHC9](#)

Cytogenetics: 5q35.2

**Summary:** This gene encodes a secreted, homodimeric glycoprotein that is expressed in a wide variety of tissues and may have autocrine or paracrine functions. The encoded protein has 10 of its 15 cysteine residues conserved among stanniocalcin family members and is phosphorylated by casein kinase 2 exclusively on its serine residues. Its C-terminus contains a cluster of histidine residues which may interact with metal ions. The protein may play a role in the regulation of renal and intestinal calcium and phosphate transport, cell metabolism, or cellular calcium/phosphate homeostasis. Constitutive overexpression of human stanniocalcin 2 in mice resulted in pre- and postnatal growth restriction, reduced bone and skeletal muscle growth, and organomegaly. Expression of this gene is induced by estrogen and altered in some breast cancers. [provided by RefSeq, Jul 2008]

**Protein Families:** Druggable Genome, Secreted Protein

### Product images:



Coomassie blue staining of purified STC2 protein (Cat# [TP300537]). The protein was produced from HEK293T cells transfected with STC2 cDNA clone (Cat# [RC200537]) using MegaTran 2.0 (Cat# [TT210002]).