

## Product datasheet for PH300533

### ESD (NM\_001984) Human Mass Spec Standard

#### Product data:

Product Type:	Mass Spec Standards
Description:	ESD MS Standard C13 and N15-labeled recombinant protein (NP_001975)
Species:	Human
Expression Host:	HEK293
Expression cDNA Clone or AA Sequence:	RC200533
Predicted MW:	31.5 kDa
Protein Sequence:	>RC200533 protein sequence Red=Cloning site Green=Tags(s)  MALKQISSNKCFGLQKVFHDSVELNCKMKFAVYLPKKAETGKCPALYWLSGLTCTEQNFISKSGYHQS ASEHGLVVIAPDTSPRGCNKIGEDSWDFGTGAGFYVDATEDPWKTNYRMYSYVTEELPQLINANFPVDP QRMSIFGHSMGGHGALICALKNPGKYKVSFAFAPICNPVLCPWGKKA FSGYLGTDQSKWKAYDATHLVKS YPGSQLDILIDQGKDDQFLLDGQLLPDNFIAACTEKKIPVVFRLQEDYDHSYFIAITFITDHIRHHAKYL NA  TRTRPLEQKLI SEEDLAANDILDYKDDDDKV
Tag:	C-Myc/DDK
Purity:	> 80% as determined by SDS-PAGE and Coomassie blue staining
Concentration:	>0.05 µg/µL as determined by microplate BCA method
Labeling Method:	Labeled with [U- <sup>13</sup> C <sub>6</sub> , <sup>15</sup> N <sub>4</sub> ]-L-Arginine and [U- <sup>13</sup> C <sub>6</sub> , <sup>15</sup> N <sub>2</sub> ]-L-Lysine
Buffer:	25 mM Tris-HCl, 100 mM glycine, pH 7.3
Storage:	Store at -80°C. Avoid repeated freeze-thaw cycles.
Stability:	Stable for 3 months from receipt of products under proper storage and handling conditions.
RefSeq:	<u><a href="#">NP_001975</a></u>
RefSeq Size:	1208
RefSeq ORF:	846
Synonyms:	FGH
Locus ID:	2098



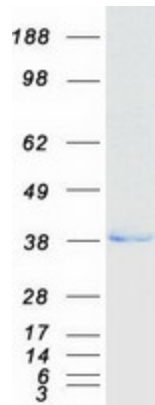
[View online »](#)

UniProt ID: [P10768](#), [A0A140VJJ2](#)

Cytogenetics: 13q14.2

Summary: This gene encodes a serine hydrolase that belongs to the esterase D family. The encoded enzyme is active toward numerous substrates including O-acetylated sialic acids, and it may be involved in the recycling of sialic acids. This gene is used as a genetic marker for retinoblastoma and Wilson's disease. [provided by RefSeq, Feb 2009]

### Product images:



Coomassie blue staining of purified ESD protein (Cat# [TP300533]). The protein was produced from HEK293T cells transfected with ESD cDNA clone (Cat# [RC200533]) using MegaTran 2.0 (Cat# [TT210002]).