

Product datasheet for PH300525

P70 S6 Kinase beta (RPS6KB2) (NM_003952) Human Mass Spec Standard

Product data:

Product Type:	Mass Spec Standards
Description:	RPS6KB2 MS Standard C13 and N15-labeled recombinant protein (NP_003943)
Species:	Human
Expression Host:	HEK293
Expression cDNA Clone or AA Sequence:	RC200525
Predicted MW:	53.5 kDa
Protein Sequence:	>RC200525 protein sequence Red=Cloning site Green=Tags(s)

MAAVFDLDLETEEGSEGEPELSPADACPLAELRAAGLEPVGHYEEVELTETSVNVGPERIGPHCFELL
RVLGKGGYGKVFQVRKVQGTNLGKIYAMKVLKAKIVRNAKDTAHTRAERNILESVKHPFIVELAYAFQT
GGKLYLILECLSGGELFTHLEREGIFLEDTACFYLAIEITLALGHLHSQGIYRDLKPENIMLSSQGHIKL
TDFGLCKESIHEGAVTHTFCGTIEYMAPEILVRSGHNRAVDWWSL GALMYDMLTGSPFFT AENRKKTMDK
IIRGKLALPPYLTPDARDLVKKFLKRNPSQRIGGGPGDAADVQRHPFFRHMNWDLLAWRVDPFRPCLQ
SEEDVSQFDTRFTRQTPVDSPDDTALSEANQAF LGFTYVAPSVLDSIKEGFSFQPKLRSRRLNSSPRV
PVSPLKFSPEFEGFRPSPSLPEPTELPLPPLLPPPPSTTAPLPIRPPSGTKKSKRGRGRPGR

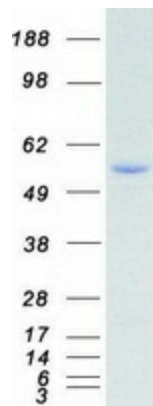
TRTRPLEQKLI SEEDLAANDILDYKDDDDKV

Tag:	C-Myc/DDK
Purity:	> 80% as determined by SDS-PAGE and Coomassie blue staining
Concentration:	>0.05 µg/µL as determined by microplate BCA method
Labeling Method:	Labeled with [U- ¹³ C ₆ , ¹⁵ N ₄]-L-Arginine and [U- ¹³ C ₆ , ¹⁵ N ₂]-L-Lysine
Buffer:	25 mM Tris-HCl, 100 mM glycine, pH 7.3
Storage:	Store at -80°C. Avoid repeated freeze-thaw cycles.
Stability:	Stable for 3 months from receipt of products under proper storage and handling conditions.
RefSeq:	<u>NP_003943</u>
RefSeq Size:	1782
RefSeq ORF:	1446



[View online »](#)

Synonyms:	KLS; p70(S6K)-beta; P70-beta; P70-beta-1; P70-beta-2; p70S6Kb; S6K-beta2; S6K2; S6KB; S6Kbeta; S6KI(2); SRK; STK14B
Locus ID:	6199
UniProt ID:	Q9UBS0
Cytogenetics:	11q13.2
Summary:	This gene encodes a member of the RSK (ribosomal S6 kinase) family of serine/threonine kinases. This kinase contains a kinase catalytic domain and phosphorylates the S6 ribosomal protein and eukaryotic translation initiation factor 4B (eIF4B). Phosphorylation of S6 leads to an increase in protein synthesis and cell proliferation. [provided by RefSeq, Jan 2015]
Protein Families:	Druggable Genome, Protein Kinase
Protein Pathways:	Acute myeloid leukemia, ErbB signaling pathway, Fc gamma R-mediated phagocytosis, Insulin signaling pathway, mTOR signaling pathway, TGF-beta signaling pathway

Product images:

Coomassie blue staining of purified RPS6KB2 protein (Cat# [TP300525]). The protein was produced from HEK293T cells transfected with RPS6KB2 cDNA clone (Cat# [RC200525]) using MegaTran 2.0 (Cat# [TT210002]).