

Product datasheet for PH300521

MCL1 (NM_021960) Human Mass Spec Standard

Product data:

Product Type:	Mass Spec Standards
Description:	MCL1 MS Standard C13 and N15-labeled recombinant protein (NP_068779)
Species:	Human
Expression Host:	HEK293
Expression cDNA Clone or AA Sequence:	RC200521
Predicted MW:	37.2 kDa
Protein Sequence:	>RC200521 representing NM_021960 Red=Cloning site Green=Tags(s) MFGLKRNAVIGLNLVYCGAGLGAGSGGATRPGGRLATEKEASARREIGGGEAGAVIGGSAGASPPSTLT PDSRRVARPPPIGAEVPDVTATPARLLFFAPTRRAAPLEEMEAPAADAIMSPEEELDGYEPEPLGKRPAV LPLELVGESGNTSTDGSLPSTPPPAEEEEDEL YRQSLEIISRYLREQATGAKDTKPMGRSGATSRKAL ETLRRVGDGVQRNHETAFQGMRLKLDIKNEDDVKSLSRVMIHVFSDGVTNWGRIVTLISFGAFVAKHLKT INQESCIEPLAESITDVLVRTKRDWLVKQRGWDGFVEFFHVEDLEGGIRNVLLAFAGVAGVGAGLAYLIR TRTRPLEQKLI SEEDLAANDILDYKDDDDKV
Tag:	C-Myc/DDK
Purity:	> 80% as determined by SDS-PAGE and Coomassie blue staining
Concentration:	>0.05 µg/µL as determined by microplate BCA method
Labeling Method:	Labeled with [U- ¹³ C ₆ , ¹⁵ N ₄]-L-Arginine and [U- ¹³ C ₆ , ¹⁵ N ₂]-L-Lysine
Buffer:	25 mM Tris-HCl, 100 mM glycine, pH 7.3
Storage:	Store at -80°C. Avoid repeated freeze-thaw cycles.
Stability:	Stable for 3 months from receipt of products under proper storage and handling conditions.
RefSeq:	NP_068779
RefSeq Size:	4020
RefSeq ORF:	1050
Synonyms:	bcl2-L-3; BCL2L3; EAT; Mcl-1; MCL1-ES; mcl1/EAT; MCL1L; MCL1S; TM
Locus ID:	4170



[View online »](#)

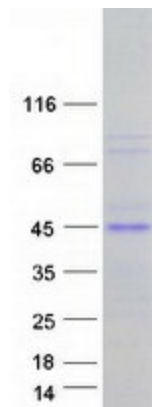
UniProt ID: [Q07820](#)

Cytogenetics: 1q21.2

Summary: This gene encodes an anti-apoptotic protein, which is a member of the Bcl-2 family. Alternative splicing results in multiple transcript variants. The longest gene product (isoform 1) enhances cell survival by inhibiting apoptosis while the alternatively spliced shorter gene products (isoform 2 and isoform 3) promote apoptosis and are death-inducing. [provided by RefSeq, Oct 2010]

Protein Families: Druggable Genome, Transmembrane

Product images:



Coomassie blue staining of purified MCL1 protein (Cat# [TP300521]). The protein was produced from HEK293T cells transfected with MCL1 cDNA clone (Cat# [RC200521]) using MegaTran 2.0 (Cat# [TT210002]).