

Product datasheet for PH300515

PCOLCE (NM_002593) Human Mass Spec Standard

Product data:

Product Type:	Mass Spec Standards
Description:	PCOLCE MS Standard C13 and N15-labeled recombinant protein (NP_002584)
Species:	Human
Expression Host:	HEK293
Expression cDNA Clone or AA Sequence:	RC200515
Predicted MW:	48 kDa
Protein Sequence:	>RC200515 protein sequence Red=Cloning site Green=Tags(s)

MLPAATASLLGPLLACALLPFAQGQTPNYTRPVFLCGGDVKGESGYVASEGFPNLYPPNKECIWITVPEGQTVLSLFRVFDLELHPACRYDALEVFAGSGTSGQRLGRFCGTFRPAPLVAPGNQVTLRMTTDEGTGGRGFLLWYSGRATSGTEHQFCGGRLEKAQGTLTTPNWPESDYPPGISCSWHIIAPPDQVIALTFEKFDLEPTYCRYDSVSFNGAVSDDSRRLGKFCGDAVPGSISSEGNELLVQFVSDL SVTADGFSASYKTLPRGTAKEGQGP GPKRGTEPKVKLPKKSQPPEKTEESPSAPDAPTCPKQCRRTGTLQSNFCASSLVVTATVKSMVREPEGGLAVTVSLIGAYKTGGLDLPSPTGASLKFYVPCKQCPMKKGVSYLLMGQVEENRGPVLPPESEFVLLHRPNQDQILTNL SKRKCP SQPVRAAASQD

TRTRPLEQKLI SEEDLAANDILDYKDDDDKV

Tag:	C-Myc/DDK
Purity:	> 80% as determined by SDS-PAGE and Coomassie blue staining
Concentration:	>0.05 µg/µL as determined by microplate BCA method
Labeling Method:	Labeled with [U- ¹³ C ₆ , ¹⁵ N ₄]-L-Arginine and [U- ¹³ C ₆ , ¹⁵ N ₂]-L-Lysine
Buffer:	25 mM Tris-HCl, 100 mM glycine, pH 7.3
Storage:	Store at -80°C. Avoid repeated freeze-thaw cycles.
Stability:	Stable for 3 months from receipt of products under proper storage and handling conditions.
RefSeq:	<u>NP_002584</u>
RefSeq Size:	1651
RefSeq ORF:	1347
Synonyms:	PCPE; PCPE-1; PCPE1



[View online »](#)

Locus ID: 5118

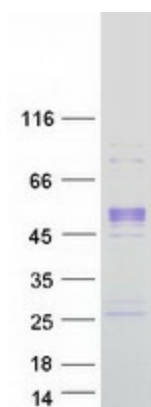
UniProt ID: [Q15113](#)

Cytogenetics: 7q22.1

Summary: Fibrillar collagen types I-III are synthesized as precursor molecules known as procollagens. These precursors contain amino- and carboxyl-terminal peptide extensions known as N- and C-propeptides, respectively, which are cleaved, upon secretion of procollagen from the cell, to yield the mature triple helical, highly structured fibrils. This gene encodes a glycoprotein which binds and drives the enzymatic cleavage of type I procollagen and heightens C-proteinase activity. [provided by RefSeq, Jul 2008]

Protein Families: Secreted Protein

Product images:



Coomassie blue staining of purified PCOLCE protein (Cat# [TP300515]). The protein was produced from HEK293T cells transfected with PCOLCE cDNA clone (Cat# [RC200515]) using MegaTran 2.0 (Cat# [TT210002]).