

Product datasheet for PH300501

ARL2 (NM_001667) Human Mass Spec Standard

Product data:

Product Type:	Mass Spec Standards
Description:	ARL2 MS Standard C13 and N15-labeled recombinant protein (NP_001658)
Species:	Human
Expression Host:	HEK293
Expression cDNA Clone or AA Sequence:	RC200501
Predicted MW:	20.9 kDa
Protein Sequence:	>RC200501 protein sequence Red=Cloning site Green=Tags(s) MGLLTILKMKQKERELRLLMLGLDNAGKTTILKKNFNGEDIDTISPTLGFNIKLEHRGFKLNIWDVGGQ KSLRSYWRNYFESTDGLIWWVDSADRQRMQDCQRELQSLLEERLAGATLLIFANKQDLPALSSNAIRE VLELDSIRSHHWCIQGCSAVTGENLLPGIDWLLDDISSRIFTAD TRTRPLEQKLISEEDLAANDILDYKDDDDKV
Tag:	C-Myc/DDK
Purity:	> 80% as determined by SDS-PAGE and Coomassie blue staining
Concentration:	>0.05 µg/µL as determined by microplate BCA method
Labeling Method:	Labeled with [U- 13C6, 15N4]-L-Arginine and [U- 13C6, 15N2]-L-Lysine
Buffer:	25 mM Tris-HCl, 100 mM glycine, pH 7.3
Storage:	Store at -80°C. Avoid repeated freeze-thaw cycles.
Stability:	Stable for 3 months from receipt of products under proper storage and handling conditions.
RefSeq:	<u>NP_001658</u>
RefSeq Size:	993
RefSeq ORF:	552
Synonyms:	ARFL2
Locus ID:	402
UniProt ID:	<u>P36404</u> , <u>Q53YD8</u>

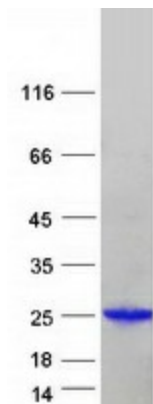


[View online »](#)

Cytogenetics: 11q13.1

Summary: This gene encodes a small GTP-binding protein of the RAS superfamily which functions as an ADP-ribosylation factor (ARF). The encoded protein is one of a functionally distinct group of ARF-like genes. [provided by RefSeq, Jul 2008]

Product images:



Coomassie blue staining of purified ARL2 protein (Cat# [TP300501]). The protein was produced from HEK293T cells transfected with ARL2 cDNA clone (Cat# [RC200501]) using MegaTran 2.0 (Cat# [TT210002]).