

## Product datasheet for PH300496

### CDC25A (NM\_001789) Human Mass Spec Standard

#### Product data:

Product Type:	Mass Spec Standards
Description:	CDC25A MS Standard C13 and N15-labeled recombinant protein (NP_001780)
Species:	Human
Expression Host:	HEK293
Expression cDNA Clone or AA Sequence:	RC200496
Predicted MW:	59.1 kDa
Protein Sequence:	>RC200496 protein sequence Red=Cloning site Green=Tags(s)

MELGPEPPHRRLLFACSPPPASQPVVKALFGASAAGGLSPVTNLTVMQDLQGLGSDYEQPLEVKNNSN  
LQRMGSSESTDSGFCLDSPGLDSKENLENPMRRIHSLPQKLLGCSPALKRSHSDSLDHDIFQLIDPDEN  
KENEAFEFKPKVPRVSRGCLHSHGLQEGKDLFTQRQNSAPARMLSSNERDSSEPGNFIPLFTPQSPVTAT  
LSDEDDGFVDLLDGENLKNEEETPSCMASLWTAPLVMRTNLDNRCKLFDSPSLCSSSTRSVLKRPERSQ  
EESPPGSTKRRKSMGSPKESTNPEKAHETLHQSLSLASSPKGTIENILDNDPRDLIGDFSKGYLFHTV  
AGKHQDLKYISPEIMASVLNGKFANLIKEFVIIDCRYPYEEYEGGHKGAVNLHMEEVEDFLLKKPIVPT  
DGKRVI VVFHCEFSSERGPRMCRYVREDRDLGNEYPKLHYPELVYVKGKYKEFFMKCQSYCEPPSYRPMH  
HEDFKEDLKKFRTKSRTWAGEKSKREMYRLLKLL

TRTRPLEQKLI SEEDLAANDILDYKDDDDKV

Tag:	C-Myc/DDK
Purity:	> 80% as determined by SDS-PAGE and Coomassie blue staining
Concentration:	>0.05 µg/µL as determined by microplate BCA method
Labeling Method:	Labeled with [U- 13C6, 15N4]-L-Arginine and [U- 13C6, 15N2]-L-Lysine
Buffer:	25 mM Tris-HCl, 100 mM glycine, pH 7.3
Storage:	Store at -80°C. Avoid repeated freeze-thaw cycles.
Stability:	Stable for 3 months from receipt of products under proper storage and handling conditions.
RefSeq:	<u>NP_001780</u>
RefSeq Size:	3717
RefSeq ORF:	1572



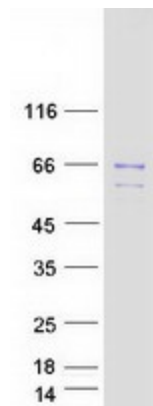
[View online »](#)

**Synonyms:** CDC25A2  
**Locus ID:** 993  
**UniProt ID:** [P30304](#)  
**Cytogenetics:** 3p21.31

**Summary:** CDC25A is a member of the CDC25 family of phosphatases. CDC25A is required for progression from G1 to the S phase of the cell cycle. It activates the cyclin-dependent kinase CDC2 by removing two phosphate groups. CDC25A is specifically degraded in response to DNA damage, which prevents cells with chromosomal abnormalities from progressing through cell division. CDC25A is an oncogene, although its exact role in oncogenesis has not been demonstrated. Two transcript variants encoding different isoforms have been found for this gene. [provided by RefSeq, Jul 2008]

**Protein Families:** Druggable Genome, Phosphatase  
**Protein Pathways:** Cell cycle, Progesterone-mediated oocyte maturation

### Product images:



Coomassie blue staining of purified CDC25A protein (Cat# [TP300496]). The protein was produced from HEK293T cells transfected with CDC25A cDNA clone (Cat# [RC200496]) using MegaTran 2.0 (Cat# [TT210002]).