

Product datasheet for PH300490

Claudin 4 (CLDN4) (NM_001305) Human Mass Spec Standard

Product data:

Product Type:	Mass Spec Standards
Description:	CLDN4 MS Standard C13 and N15-labeled recombinant protein (NP_001296)
Species:	Human
Expression Host:	HEK293
Expression cDNA Clone or AA Sequence:	RC200490
Predicted MW:	22.1 kDa
Protein Sequence:	>RC200490 protein sequence Red=Cloning site Green=Tags(s) MASMGLQVMGIALAVLGWLAVMLCCALPMWRVTAFIGSNIVTSQTIWEGLWMNCVVQSTGQMCKVYDSL LALPQDLQAARALVVISIIVAALGVLLSVVGGKCTNCLEDESAAKAKTMIVAGVVFLLAGLMVIVPVSMTA HNI IQDFYNPLVASGQKREMGASLYVWAAAGLLLLGGGLLCCNCPRTDKPYSAKYSAARSAAASNYV TRTRPLEQKLI SEEDLAANDILDYKDDDDKV
Tag:	C-Myc/DDK
Purity:	> 80% as determined by SDS-PAGE and Coomassie blue staining
Concentration:	>0.05 µg/µL as determined by microplate BCA method
Labeling Method:	Labeled with [U- 13C6, 15N4]-L-Arginine and [U- 13C6, 15N2]-L-Lysine
Buffer:	25 mM Tris-HCl, 100 mM glycine, pH 7.3
Storage:	Store at -80°C. Avoid repeated freeze-thaw cycles.
Stability:	Stable for 3 months from receipt of products under proper storage and handling conditions.
RefSeq:	NP_001296
RefSeq Size:	1859
RefSeq ORF:	627
Synonyms:	CPE-R; CPER; CPETR; CPETR1; hCPE-R; WBSCR8
Locus ID:	1364
UniProt ID:	O14493 , Q75L80



[View online »](#)

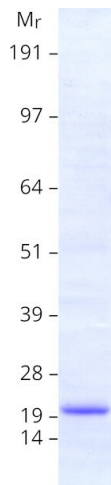
Cytogenetics: 7q11.23

Summary: The protein encoded by this intronless gene belongs to the claudin family. Claudins are integral membrane proteins that are components of the epithelial cell tight junctions, which regulate movement of solutes and ions through the paracellular space. This protein is a high-affinity receptor for Clostridium perfringens enterotoxin (CPE) and may play a role in internal organ development and function during pre- and postnatal life. This gene is deleted in Williams-Beuren syndrome, a neurodevelopmental disorder affecting multiple systems. [provided by RefSeq, Sep 2013]

Protein Families: Druggable Genome, Transmembrane

Protein Pathways: Cell adhesion molecules (CAMs), Leukocyte transendothelial migration, Tight junction

Product images:



Coomassie blue staining of purified CLDN4 protein (Cat# [TP300490]). The protein was produced from HEK293T cells transfected with CLDN4 cDNA clone (Cat# [RC200490]) using MegaTran 2.0 (Cat# [TT210002]).