

## Product datasheet for PH300484

### CPT2 (NM\_000098) Human Mass Spec Standard

#### Product data:

Product Type:	Mass Spec Standards
Description:	CPT2 MS Standard C13 and N15-labeled recombinant protein (NP_000089)
Species:	Human
Expression Host:	HEK293
Expression cDNA Clone or AA Sequence:	RC200484
Predicted MW:	73.8 kDa
Protein Sequence:	>RC200484 protein sequence Red=Cloning site Green=Tags(s)
	MVPRLLLRWPRGPAVGPAGPSRPLSAGSGPGQYLQRSIVPTMHYQDSLPRLPKLEDITIRRYLSAQKP LLNDGQFRKTEQFCKSFENGIGKELHEQLVALDKQNKHTSYILGPWFDMYL SARDSVVLNFPMAFNPD PKSEYNDQLTRATNMTVSAIRFLKTLRAGLLEPEVFHNLNPAKSDTITFKRLIRFVPSLWYGYLVNAY PLDMSQYFRLFNSTRLPKPSRDELFTDDKARHLLVLRKGNFYIFDVLDDQGNIVSPSEIQAHLKYILSDS SPAPEFPLAYLTSENNDIWAELRQKLMSSGNEESLRKVDSAVFCLCLDDFPKDLVHL SHNMLHGDGTNR WFDKSFNLIIAKDGSTAIHFEHSWGDGVAVLRFFNEVFKDSTQTPAVTPQSQPATTDSTVTVQKLNFLT DALKTGITAAKEKFDATMKTLTIDCVQFQRGGKEFLKQKLSPDVAQLAFQMAFLRQYQGTVATYESCS TAAFKHGRTETIRPASVYTKRCSEAFVREPSRHSAGELQQMMVECSKYHGQLTKEAMGQGFDRHLFALR HLAAAKGIILPELYLDPAYGQINHNVLSTLSSPAVNLGGFAPVVSDGFGVGYAVHDNWI GCVSSYPG RNAREFLQCVEKALEDVFDALLEGKSIKS
	TRTRPLEQKLI SEEDLAANDILDYKDDDDKV
Tag:	C-Myc/DDK
Purity:	> 80% as determined by SDS-PAGE and Coomassie blue staining
Concentration:	>0.05 µg/µL as determined by microplate BCA method
Labeling Method:	Labeled with [U- 13C6, 15N4]-L-Arginine and [U- 13C6, 15N2]-L-Lysine
Buffer:	25 mM Tris-HCl, 100 mM glycine, pH 7.3
Storage:	Store at -80°C. Avoid repeated freeze-thaw cycles.
Stability:	Stable for 3 months from receipt of products under proper storage and handling conditions.
RefSeq:	<u><a href="#">NP_000089</a></u>
RefSeq Size:	3110



[View online »](#)

RefSeq ORF: 1974

Synonyms: CPT1; CPTASE; IIAE4

Locus ID: 1376

UniProt ID: [P23786](#), [A0A140VK13](#)

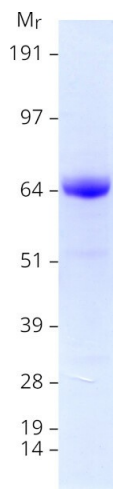
Cytogenetics: 1p32.3

**Summary:** The protein encoded by this gene is a nuclear protein which is transported to the mitochondrial inner membrane. Together with carnitine palmitoyltransferase I, the encoded protein oxidizes long-chain fatty acids in the mitochondria. Defects in this gene are associated with mitochondrial long-chain fatty-acid (LCFA) oxidation disorders. [provided by RefSeq, Jul 2008]

**Protein Families:** Druggable Genome

**Protein Pathways:** Fatty acid metabolism, PPAR signaling pathway

### Product images:



Coomassie blue staining of purified CPT2 protein (Cat# [TP300484]). The protein was produced from HEK293T cells transfected with CPT2 cDNA clone (Cat# [RC200484]) using MegaTran 2.0 (Cat# [TT210002]).