

## Product datasheet for PH300483

### CRMP1 (NM\_001313) Human Mass Spec Standard

#### Product data:

Product Type:	Mass Spec Standards
Description:	CRMP1 MS Standard C13 and N15-labeled recombinant protein (NP_001304)
Species:	Human
Expression Host:	HEK293
Expression cDNA Clone or AA Sequence:	RC200483
Predicted MW:	62.2 kDa
Protein Sequence:	>RC200483 protein sequence Red=Cloning site Green=Tags(s)

MSYQGKKSIPHITSDRLLIKGGRIINDDQSLYADVYLEDGLIKQIGENLIVPGGVKTIEANGRMVIPGGI  
DVNTYLQKPSQGMATAADFFQGTAAALVGGTMMIIDHVVPEPGSSLLTSFEKWHEAADTKSCCDYSLHVD  
ITSWYDGVREELEVLVQDKGVNSFQVYVYKDYVQMSDSQLYEAFTFLKGLGAVILVHAENGLIAEQK  
RILEMGITGPEGHALSRPEELEAEAVFRAITIAGRINCPVYITKVMKSAADIIALARKKGPLVFGPEIA  
ASLGTGDGTHYWSKNWAKAAAFVTSPLSPDPTTPDYLTSLACGDLQVTGSGHCPYSTAQKAVGKDNFTL  
IPEGVNGIEERMTVVWDKAVATGKMDENQFVAVTSTNAAKIFNL YPRKGRIVAGSDADVVIWDPDKLTI  
TAKSHKSAVEYNI FEGMECHGSPLVVISQKIVFEDGNINVNKGMGRFIPRKAPEHL YQRVKIRNKVFG  
LQGVSRGMYDGPVYEVPA TP KYATPAPSAKSSPSKHQPPP I RNLHQSNFSLSGAQIDDNNPRRTGHRIVA  
PPGGRSNITSLG

TRTRPLEQKLISEEDLAANDILDYKDDDDKV

Tag:	C-Myc/DDK
Purity:	> 80% as determined by SDS-PAGE and Coomassie blue staining
Concentration:	>0.05 µg/µL as determined by microplate BCA method
Labeling Method:	Labeled with [U- 13C6, 15N4]-L-Arginine and [U- 13C6, 15N2]-L-Lysine
Buffer:	25 mM Tris-HCl, 100 mM glycine, pH 7.3
Storage:	Store at -80°C. Avoid repeated freeze-thaw cycles.
Stability:	Stable for 3 months from receipt of products under proper storage and handling conditions.
RefSeq:	<a href="#">NP_001304</a>
RefSeq Size:	3074
RefSeq ORF:	1716



[View online »](#)

**Synonyms:** CRMP-1; DPYSL1; DRP-1; DRP1; ULIP-3

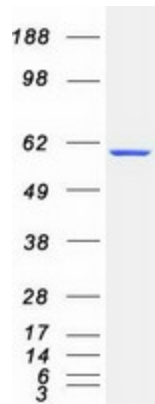
**Locus ID:** 1400

**UniProt ID:** [Q14194](#), [Q96111](#)

**Cytogenetics:** 4p16.2

**Summary:** This gene encodes a member of a family of cytosolic phosphoproteins expressed exclusively in the nervous system. The encoded protein is thought to be a part of the semaphorin signal transduction pathway implicated in semaphorin-induced growth cone collapse during neural development. Alternative splicing results in multiple transcript variants. [provided by RefSeq, Jul 2008]

### Product images:



Coomassie blue staining of purified CRMP1 protein (Cat# [TP300483]). The protein was produced from HEK293T cells transfected with CRMP1 cDNA clone (Cat# [RC200483]) using MegaTran 2.0 (Cat# [TT210002]).