

Product datasheet for PH300476

GALK1 (NM_000154) Human Mass Spec Standard

Product data:

Product Type:	Mass Spec Standards
Description:	GALK1 MS Standard C13 and N15-labeled recombinant protein (NP_000145)
Species:	Human
Expression Host:	HEK293
Expression cDNA Clone or AA Sequence:	RC200476
Predicted MW:	42.3 kDa
Protein Sequence:	>RC200476 protein sequence Red=Cloning site Green=Tags(s)

MAALRQPQVAELLAEARRAFREFGAPELAVSAPGRVNLIGEHTDYNQGLVLPMALELMTVLVGSPRKD
GLVSLLTSEGADEPQRLQFPLPTAQRSLPEGTPRWANYVKGVIQYYPAAPLPGFSVVVSSVPLGGGLS
SSASLEVATYTFLLQQLCPDSGTIAARAQVCQAEHSFAGMPCGIMDQFISLMGQKGHALLIDCRSLETSL
VPLSDPKLAVLITNSNVRHSLASSEYPVRRRQCEEVARALGKESLREVQLEEAARDLVSKEGFRRARH
VVGIEIRRTAQAAAALRRGDYRAFGRMLVESHSLRDDYEVSCPELDQLVEAALAVPGVYGSRTGGGFGG
CTVTLLLEASAAPHAMRHIQEHYGGTATFYLSQAADGAKVLC

TRTRPLEQKLISEEDLAANDILDYKDDDDKV

Tag:	C-Myc/DDK
Purity:	> 80% as determined by SDS-PAGE and Coomassie blue staining
Concentration:	>0.05 µg/µL as determined by microplate BCA method
Labeling Method:	Labeled with [U- ¹³ C ₆ , ¹⁵ N ₄]-L-Arginine and [U- ¹³ C ₆ , ¹⁵ N ₂]-L-Lysine
Buffer:	25 mM Tris-HCl, 100 mM glycine, pH 7.3
Storage:	Store at -80°C. Avoid repeated freeze-thaw cycles.
Stability:	Stable for 3 months from receipt of products under proper storage and handling conditions.
RefSeq:	<u>NP_000145</u>
RefSeq Size:	1361
RefSeq ORF:	1176
Synonyms:	GALK; GK1; HEL-S-19
Locus ID:	2584



[View online »](#)

UniProt ID: [P51570](#), [V9HWE7](#)

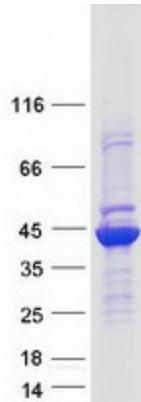
Cytogenetics: 17q25.1

Summary: Galactokinase is a major enzyme for the metabolism of galactose and its deficiency causes congenital cataracts during infancy and presenile cataracts in the adult population. [provided by RefSeq, Jul 2008]

Protein Families: Druggable Genome

Protein Pathways: Amino sugar and nucleotide sugar metabolism, Galactose metabolism, Metabolic pathways

Product images:



Coomassie blue staining of purified GALK1 protein (Cat# [TP300476]). The protein was produced from HEK293T cells transfected with GALK1 cDNA clone (Cat# [RC200476]) using MegaTran 2.0 (Cat# [TT210002]).