

Product datasheet for PH300471

GMDS (NM_001500) Human Mass Spec Standard

Product data:

Product Type:	Mass Spec Standards
Description:	GMDS MS Standard C13 and N15-labeled recombinant protein (NP_001491)
Species:	Human
Expression Host:	HEK293
Expression cDNA Clone or AA Sequence:	RC200471
Predicted MW:	41.9 kDa
Protein Sequence:	>RC200471 protein sequence Red=Cloning site Green=Tags(s)
	MAHAPARCPARGSGDGMGKPRNVALITGITGQDGSYLAEFLLLEKGYEVHGIVRRSSSFNTGRIEHL YK NPQAHIEGNMMLHYGDLTDSTCLVKIINEVKPTEIYNLGAQSHVKISFDLAEYTDVGVGTLRLLDAVK TCGLINSVKFYQASTSELYGKVQEIPQKETTPFYPRSPYGAAKLYAYWIVVNFREAYNLFVAVNGILFNHE SPRRGANFVTRKISRVAKIYLGQLECFSLGNLDAKRDWGHAKDYVEAMWMLQNDPEPFDVIATGEVHS VREFVEKSFHLHIGKTIWEGKNENEVGRCKETGKVHVTVDLKYYRPTEVDFLQGDCTKAKQKLNWKPRVA FDELVREMVHADVELMRTNPNA
	TRTRPLEQKLI SEEDLAANDILDYKDDDDKV
Tag:	C-Myc/DDK
Purity:	> 80% as determined by SDS-PAGE and Coomassie blue staining
Concentration:	>0.05 µg/µL as determined by microplate BCA method
Labeling Method:	Labeled with [U- ¹³ C ₆ , ¹⁵ N ₄]-L-Arginine and [U- ¹³ C ₆ , ¹⁵ N ₂]-L-Lysine
Buffer:	25 mM Tris-HCl, 100 mM glycine, pH 7.3
Storage:	Store at -80°C. Avoid repeated freeze-thaw cycles.
Stability:	Stable for 3 months from receipt of products under proper storage and handling conditions.
RefSeq:	<u>NP_001491</u>
RefSeq Size:	1700
RefSeq ORF:	1116
Synonyms:	GMD; SDR3E1
Locus ID:	2762



[View online »](#)

UniProt ID: [O60547](#), [E9PI88](#)

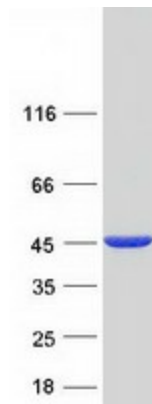
Cytogenetics: 6p25.3

Summary: GDP-mannose 4,6-dehydratase (GMD; EC 4.2.1.47) catalyzes the conversion of GDP-mannose to GDP-4-keto-6-deoxymannose, the first step in the synthesis of GDP-fucose from GDP-mannose, using NADP⁺ as a cofactor. The second and third steps of the pathway are catalyzed by a single enzyme, GDP-keto-6-deoxymannose 3,5-epimerase, 4-reductase, designated FX in humans (MIM 137020).[supplied by OMIM, Aug 2009]

Protein Families: Druggable Genome

Protein Pathways: Amino sugar and nucleotide sugar metabolism, Fructose and mannose metabolism, Metabolic pathways

Product images:



Coomassie blue staining of purified GMDS protein (Cat# [TP300471]). The protein was produced from HEK293T cells transfected with GMDS cDNA clone (Cat# [RC200471]) using MegaTran 2.0 (Cat# [TT210002]).