

Product datasheet for PH300469

GRB2 (NM_002086) Human Mass Spec Standard

Product data:

Product Type:	Mass Spec Standards
Description:	GRB2 MS Standard C13 and N15-labeled recombinant protein (NP_002077)
Species:	Human
Expression Host:	HEK293
Expression cDNA Clone or AA Sequence:	RC200469
Predicted MW:	25.2 kDa
Protein Sequence:	>RC200469 protein sequence Red =Cloning site Green =Tags(s) MEAIKDYDFKATADDELSFKRGDILKVLNEECDQNWYKAELNGKDGFIKPKNYIEMKPHPWFFGKIPRAKA EEMLSKQRHDGAFLIRESESAPGDFSLSVKFGNDVQHFVKVLRDGAGKYFLWVVKFNLSNELVDYHRSTSV SRNQQIFLRDIEQVPQQPTYVQALFDFDPQEDGELGFRRGDFIHVMDNSDPNWWKGACHGQTGMFPRNYV TPVNRNV TRTRPLEQKLI SEEDLAANDILDYKDDDDKV
Tag:	C-Myc/DDK
Purity:	> 80% as determined by SDS-PAGE and Coomassie blue staining
Concentration:	>0.05 µg/µL as determined by microplate BCA method
Labeling Method:	Labeled with [U- ¹³ C ₆ , ¹⁵ N ₄]-L-Arginine and [U- ¹³ C ₆ , ¹⁵ N ₂]-L-Lysine
Buffer:	25 mM Tris-HCl, 100 mM glycine, pH 7.3
Storage:	Store at -80°C. Avoid repeated freeze-thaw cycles.
Stability:	Stable for 3 months from receipt of products under proper storage and handling conditions.
RefSeq:	NP_002077
RefSeq Size:	3303
RefSeq ORF:	651
Synonyms:	ASH; EGFRBP-GRB2; Grb3-3; MST084; MSTP084; NCKAP2
Locus ID:	2885
UniProt ID:	P62993 , B0LPF3



[View online »](#)

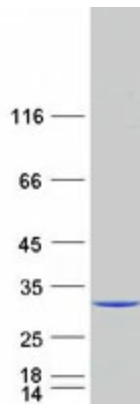
Cytogenetics: 17q25.1

Summary: The protein encoded by this gene binds the epidermal growth factor receptor and contains one SH2 domain and two SH3 domains. Its two SH3 domains direct complex formation with proline-rich regions of other proteins, and its SH2 domain binds tyrosine phosphorylated sequences. This gene is similar to the Sem5 gene of *C.elegans*, which is involved in the signal transduction pathway. Two alternatively spliced transcript variants encoding different isoforms have been found for this gene. [provided by RefSeq, Jul 2008]

Protein Families: Druggable Genome

Protein Pathways: Acute myeloid leukemia, B cell receptor signaling pathway, Chemokine signaling pathway, Chronic myeloid leukemia, Colorectal cancer, Dorso-ventral axis formation, Endometrial cancer, ErbB signaling pathway, Fc epsilon RI signaling pathway, Focal adhesion, Gap junction, Glioma, GnRH signaling pathway, Insulin signaling pathway, Jak-STAT signaling pathway, MAPK signaling pathway, Natural killer cell mediated cytotoxicity, Neurotrophin signaling pathway, Non-small cell lung cancer, Pathways in cancer, Prostate cancer, Renal cell carcinoma, T cell receptor signaling pathway

Product images:



Coomassie blue staining of purified GRB2 protein (Cat# [TP300469]). The protein was produced from HEK293T cells transfected with GRB2 cDNA clone (Cat# [RC200469]) using MegaTran 2.0 (Cat# [TT210002]).