

## Product datasheet for PH300459

### ICAM2 (NM\_000873) Human Mass Spec Standard

#### Product data:

|                                       |   |
|---------------------------------------|---|
| Product Type:                         | Mass Spec Standards   |
| Description:                          | ICAM2 MS Standard C13 and N15-labeled recombinant protein (NP_000864)   |
| Species:                              | Human   |
| Expression Host:                      | HEK293  |
| Expression cDNA Clone or AA Sequence: | RC200459  |
| Predicted MW:                         | 30.7 kDa  |
| Protein Sequence:                     | >RC200459 protein sequence<br>Red=Cloning site Green=Tags(s)<br><br>MSSFGYRTLTVLFTLICCPGSDEKVFVHVRPKKLAVEPKGSLEVNCSTTCNQPEVGGLETSLDKILLD<br>EQAQWKHYLVSNISHDTVLQCHFTCSGKQESMNSNVSVYQPPRQVILTLQPTLVAVGKSFTIECRVPTVE<br>PLDSLTLFLFRGNETLHYETFGKAAPAPQEATATFNSTADREDGHRNFSCLAVLDLMSRGGNIFHKHSAP<br>KMLEIYEPVSDSQMVIIVTVVSVLLSLFVTSVLLCFIFGQHLRQQRMGTYGVRAAWRRLPQAFRP<br><br>TRTRPLEQKLI SEEDLAANDILDYKDDDDKV |
| Tag:                                  | C-Myc/DDK   |
| Purity:                               | > 80% as determined by SDS-PAGE and Coomassie blue staining   |
| Concentration:                        | >0.05 µg/µL as determined by microplate BCA method  |
| Labeling Method:                      | Labeled with [U- <sup>13</sup> C <sub>6</sub> , <sup>15</sup> N <sub>4</sub> ]-L-Arginine and [U- <sup>13</sup> C <sub>6</sub> , <sup>15</sup> N <sub>2</sub> ]-L-Lysine  |
| Buffer:                               | 25 mM Tris-HCl, 100 mM glycine, pH 7.3  |
| Storage:                              | Store at -80°C. Avoid repeated freeze-thaw cycles.  |
| Stability:                            | Stable for 3 months from receipt of products under proper storage and handling conditions.  |
| RefSeq:                               | <a href="#">NP_000864</a>   |
| RefSeq Size:                          | 1229  |
| RefSeq ORF:                           | 825   |
| Synonyms:                             | CD102   |
| Locus ID:                             | 3384  |
| UniProt ID:                           | <a href="#">P13598</a> , <a href="#">Q6FHE2</a>   |



[View online »](#)

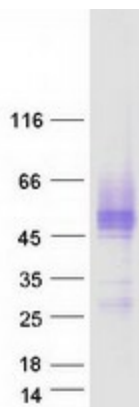
**Cytogenetics:** 17q23.3

**Summary:** The protein encoded by this gene is a member of the intercellular adhesion molecule (ICAM) family. All ICAM proteins are type I transmembrane glycoproteins, contain 2-9 immunoglobulin-like C2-type domains, and bind to the leukocyte adhesion LFA-1 protein. This protein may play a role in lymphocyte recirculation by blocking LFA-1-dependent cell adhesion. It mediates adhesive interactions important for antigen-specific immune response, NK-cell mediated clearance, lymphocyte recirculation, and other cellular interactions important for immune response and surveillance. Several transcript variants encoding the same protein have been found for this gene. [provided by RefSeq, Jul 2008]

**Protein Families:** ES Cell Differentiation/IPS, Transmembrane

**Protein Pathways:** Cell adhesion molecules (CAMs), Natural killer cell mediated cytotoxicity

### Product images:



Coomassie blue staining of purified ICAM2 protein (Cat# [TP300459]). The protein was produced from HEK293T cells transfected with ICAM2 cDNA clone (Cat# [RC200459]) using MegaTran 2.0 (Cat# [TT210002]).