

Product datasheet for PH300456

LAMP2 (NM_013995) Human Mass Spec Standard

Product data:

Product Type:	Mass Spec Standards
Description:	LAMP2 MS Standard C13 and N15-labeled recombinant protein (NP_054701)
Species:	Human
Expression Host:	HEK293
Expression cDNA Clone or AA Sequence:	RC200456
Predicted MW:	45 kDa
Protein Sequence:	>RC200456 protein sequence Red=Cloning site Green=Tags(s) MVCFRLFPVPGSGLVLVCLVLGAVRSYALELNLTDSENA TCLYAKWQMNFTVRYETT NKTYKTVTITSDHG TVTYNGSICGDDQNGPKIAVQFGPGFSWIANFTKAASTYSIDSVFSYNTGDNTTFDAEDKGILTVDEL LAIRIPLNDLFRCNLSLTKENDVVQHYWDVLVQAFVQNGTVSTNEFLCDKDKTSTVAPTIIHTTVPSPTT TPTPKEKPEAGTYSVNNGNDTCLLATMGLQLNITQDKVASVININPNTTHSTGSCRSH TALLRLNSSTIK YLDFVFAVKNNRFYLKEVNISMVYVNGSVFSIANNLSYWDAPLGSSYMCNKEQTVSVSGAFQINTFDL RVQPFNVTQGKYSTAQECSLDDDTILIP IIVGAGLSGLIIVIVIAVYVIGRRKSYAGYQTL TRTRPLEQKLI SEEDLAANDILDYKDDDDKV
Tag:	C-Myc/DDK
Purity:	> 80% as determined by SDS-PAGE and Coomassie blue staining
Concentration:	>0.05 µg/µL as determined by microplate BCA method
Labeling Method:	Labeled with [U- ¹³ C ₆ , ¹⁵ N ₄]-L-Arginine and [U- ¹³ C ₆ , ¹⁵ N ₂]-L-Lysine
Buffer:	25 mM Tris-HCl, 100 mM glycine, pH 7.3
Storage:	Store at -80°C. Avoid repeated freeze-thaw cycles.
Stability:	Stable for 3 months from receipt of products under proper storage and handling conditions.
RefSeq:	<u>NP_054701</u>
RefSeq Size:	4076
RefSeq ORF:	1230
Synonyms:	CD107b; DND; LAMP-2; LAMPB; LGP-96; LGP110
Locus ID:	3920



[View online »](#)

UniProt ID: [P13473](#)

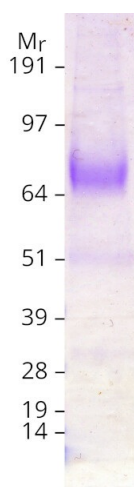
Cytogenetics: Xq24

Summary: The protein encoded by this gene is a member of a family of membrane glycoproteins. This glycoprotein provides selectins with carbohydrate ligands. It may play a role in tumor cell metastasis. It may also function in the protection, maintenance, and adhesion of the lysosome. Alternative splicing of this gene results in multiple transcript variants encoding distinct proteins. [provided by RefSeq, Jul 2008]

Protein Families: Druggable Genome, ES Cell Differentiation/IPS, Transmembrane

Protein Pathways: Lysosome

Product images:



Coomassie blue staining of purified LAMP2 protein (Cat# [TP300456]). The protein was produced from HEK293T cells transfected with LAMP2 cDNA clone (Cat# [RC200456]) using MegaTran 2.0 (Cat# [TT210002]).