

Product datasheet for PH300433

Rab2 (RAB2A) (NM_002865) Human Mass Spec Standard

Product data:

Product Type:	Mass Spec Standards
Description:	RAB2A MS Standard C13 and N15-labeled recombinant protein (NP_002856)
Species:	Human
Expression Host:	HEK293
Expression cDNA Clone or AA Sequence:	RC200433
Predicted MW:	23.5 kDa
Protein Sequence:	>RC200433 protein sequence Red=Cloning site Green=Tags(s) MAYAYLFKYIIIGDTGVGKSCLLLQFTDKRFQPVHDLTIGVEFGARMITIDGKQIKLQIWDTAGQESFRS ITRSYYRGAAGALLVYDITRRDTFNHLTTWLEDARQHSNSNMVIMLIGNKSDLESRREVKKEEGEAFARE HGLIFMETSAKTASNVEEAFINTAKEIYEKIQEGVFDINNEANGIKIGPQHAATNATHAGNQGQAGGG CC TRTRPLEQKLISEEDLAANDILDYKDDDDKV
Tag:	C-Myc/DDK
Purity:	> 80% as determined by SDS-PAGE and Coomassie blue staining
Concentration:	>0.05 µg/µL as determined by microplate BCA method
Labeling Method:	Labeled with [U- ¹³ C ₆ , ¹⁵ N ₄]-L-Arginine and [U- ¹³ C ₆ , ¹⁵ N ₂]-L-Lysine
Buffer:	25 mM Tris-HCl, 100 mM glycine, pH 7.3
Storage:	Store at -80°C. Avoid repeated freeze-thaw cycles.
Stability:	Stable for 3 months from receipt of products under proper storage and handling conditions.
RefSeq:	NP_002856
RefSeq Size:	3812
RefSeq ORF:	636
Synonyms:	LHX; RAB2
Locus ID:	5862
UniProt ID:	P61019 , A0A024R7V6



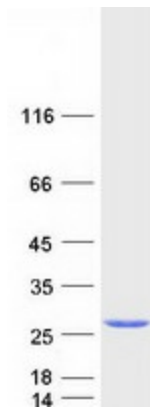
[View online »](#)

Cytogenetics: 8q12.1-q12.2

Summary: The protein encoded by this gene belongs to the Rab family, members of which are small molecular weight guanosine triphosphatases (GTPases) that contain highly conserved domains involved in GTP binding and hydrolysis. The Rabs are membrane-bound proteins, involved in vesicular fusion and trafficking. This protein is a resident of pre-Golgi intermediates, and is required for protein transport from the endoplasmic reticulum (ER) to the Golgi complex. Alternatively spliced transcript variants encoding different isoforms have been found for this gene. [provided by RefSeq, Oct 2011]

Protein Families: Druggable Genome

Product images:



Coomassie blue staining of purified RAB2A protein (Cat# [TP300433]). The protein was produced from HEK293T cells transfected with RAB2A cDNA clone (Cat# [RC200433]) using MegaTran 2.0 (Cat# [TT210002]).