

## Product datasheet for PH300432

### RAB6A (NM\_002869) Human Mass Spec Standard

#### Product data:

Product Type:	Mass Spec Standards
Description:	RAB6A MS Standard C13 and N15-labeled recombinant protein (NP_002860)
Species:	Human
Expression Host:	HEK293
Expression cDNA Clone or AA Sequence:	RC200432
Predicted MW:	23.5 kDa
Protein Sequence:	>RC200432 protein sequence Red=Cloning site Green=Tags(s)  MSTGGDFGNPLRKFVLVFLGSEQSVGKTSLITRFMYDSFDNTYQATIGIDFLSKTMYLEDRTIRLQLWDTA GQERFRSLIPSYIRDSAAAVVYDITVNSFQQTTKWIDDVVRTERGSDVIIMLVGNKTDLADKRQVSIIE GERKAKELNVMFIETSAKAGYNVQLFRRVAAALPGMESTQDRSREDMIDIKLEKPEQPVSEGGCSC  TRTRPLEQKLISEEDLAANDILDYKDDDDKV
Tag:	C-Myc/DDK
Purity:	> 80% as determined by SDS-PAGE and Coomassie blue staining
Concentration:	>0.05 µg/µL as determined by microplate BCA method
Labeling Method:	Labeled with [U- <sup>13</sup> C <sub>6</sub> , <sup>15</sup> N <sub>4</sub> ]-L-Arginine and [U- <sup>13</sup> C <sub>6</sub> , <sup>15</sup> N <sub>2</sub> ]-L-Lysine
Buffer:	25 mM Tris-HCl, 100 mM glycine, pH 7.3
Storage:	Store at -80°C. Avoid repeated freeze-thaw cycles.
Stability:	Stable for 3 months from receipt of products under proper storage and handling conditions.
RefSeq:	<u>NP_002860</u>
RefSeq Size:	3419
RefSeq ORF:	624
Synonyms:	RAB6
Locus ID:	5870
UniProt ID:	<u>P20340</u> , <u>A0A024R5H8</u>



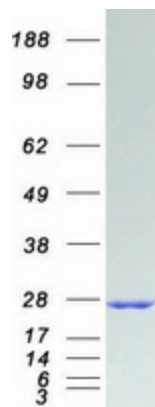
[View online »](#)

**Cytogenetics:** 11q13.4

**Summary:** This gene encodes a member of the RAB family, which belongs to the small GTPase superfamily. GTPases of the RAB family bind to various effectors to regulate the targeting and fusion of transport carriers to acceptor compartments. This protein is located at the Golgi apparatus, which regulates trafficking in both a retrograde (from early endosomes and Golgi to the endoplasmic reticulum) and an anterograde (from the Golgi to the plasma membrane) directions. Myosin II is an effector of this protein in these processes. This protein is also involved in assembly of human cytomegalovirus (HCMV) by interacting with the cellular protein Bicaudal D1, which interacts with the HCMV virion tegument protein, pp150. Multiple alternatively spliced transcript variants encoding different isoforms have been identified. [provided by RefSeq, Aug 2011]

**Protein Families:** Druggable Genome

### Product images:



Coomassie blue staining of purified RAB6A protein (Cat# [TP300432]). The protein was produced from HEK293T cells transfected with RAB6A cDNA clone (Cat# [RC200432]) using MegaTran 2.0 (Cat# [TT210002]).