

## Product datasheet for PH300431

### RAB7L1 (RAB29) (NM\_003929) Human Mass Spec Standard

#### Product data:

|                                       |  |
|---------------------------------------|--|
| Product Type:                         | Mass Spec Standards  |
| Description:                          | RAB7L1 MS Standard C13 and N15-labeled recombinant protein (NP_003920)   |
| Species:                              | Human  |
| Expression Host:                      | HEK293   |
| Expression cDNA Clone or AA Sequence: | RC200431   |
| Predicted MW:                         | 23.2 kDa   |
| Protein Sequence:                     | >RC200431 protein sequence<br>Red=Cloning site Green=Tags(s)<br><br>MGSRDHLFKVLVVGDAAVGKTSLVQRYSQDSFSKHYKSTVGVDFAKVLQWSDYEIVRLQLWDIAGQERF<br>TSMTRLYYRDASACVIMFDVTNATTFSNSQRWKQDLDSKLTLPNGEPVPCLLLANKCDLSPWAVSRDQID<br>RFSKENGFTGWTETSVKENKNINEAMRVLIEKMMRNSTEDIMSLSTQGDYINLQTKSSSWSCC<br><br>TRTRPLEQKLI SEEDLAANDILDYKDDDDKV |
| Tag:                                  | C-Myc/DDK  |
| Purity:                               | > 80% as determined by SDS-PAGE and Coomassie blue staining  |
| Concentration:                        | >0.05 µg/µL as determined by microplate BCA method   |
| Labeling Method:                      | Labeled with [U- 13C6, 15N4]-L-Arginine and [U- 13C6, 15N2]-L-Lysine   |
| Buffer:                               | 25 mM Tris-HCl, 100 mM glycine, pH 7.3   |
| Storage:                              | Store at -80°C. Avoid repeated freeze-thaw cycles.   |
| Stability:                            | Stable for 3 months from receipt of products under proper storage and handling conditions.   |
| RefSeq:                               | <a href="#">NP_003920</a>  |
| RefSeq Size:                          | 3324   |
| RefSeq ORF:                           | 609  |
| Synonyms:                             | RAB7L; RAB7L1  |
| Locus ID:                             | 8934   |
| UniProt ID:                           | <a href="#">O14966</a> , <a href="#">Q6FGU7</a>  |



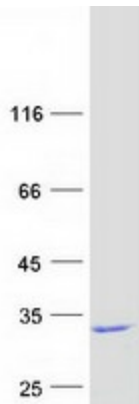
[View online »](#)

**Cytogenetics:** 1q32.1

**Summary:** Rab GTPase key regulator in vesicle trafficking. Essential for maintaining the integrity of the endosome-trans-Golgi network structure. Together with LRRK2, plays a role in the retrograde trafficking pathway for recycling proteins, such as mannose 6 phosphate receptor (M6PR), between lysosomes and the Golgi apparatus in a retromer-dependent manner. Regulates neuronal process morphology in the intact central nervous system (CNS). May play a role in the formation of typhoid toxin transport intermediates during *Salmonella enterica* serovar Typhi (*S.Typhi*) epithelial cell infection.[UniProtKB/Swiss-Prot Function]

**Protein Families:** Druggable Genome

### Product images:



Coomassie blue staining of purified RAB29 protein (Cat# [TP300431]). The protein was produced from HEK293T cells transfected with RAB29 cDNA clone (Cat# [RC200431]) using MegaTran 2.0 (Cat# [TT210002]).