

## Product datasheet for PH300423

### RPL38 (NM\_001035258) Human Mass Spec Standard

#### Product data:

Product Type:	Mass Spec Standards
Description:	RPL38 MS Standard C13 and N15-labeled recombinant protein (NP_001030335)
Species:	Human
Expression Host:	HEK293
Expression cDNA Clone or AA Sequence:	RC200423
Predicted MW:	8.2 kDa
Protein Sequence:	>RC200423 protein sequence Red=Cloning site Green=Tags(s)  MPRKIEEIKDFLLTARRKDAKSVKIKKNKDNVFKVRCSTRYLYTLVITDKEKAELKQSLPPGLAVKELK  TRTRPLEQKLI SEEDLAANDILDYKDDDDKV
Tag:	C-Myc/DDK
Purity:	> 80% as determined by SDS-PAGE and Coomassie blue staining
Concentration:	>0.05 µg/µL as determined by microplate BCA method
Labeling Method:	Labeled with [U- 13C6, 15N4]-L-Arginine and [U- 13C6, 15N2]-L-Lysine
Buffer:	25 mM Tris-HCl, 100 mM glycine, pH 7.3
Storage:	Store at -80°C. Avoid repeated freeze-thaw cycles.
Stability:	Stable for 3 months from receipt of products under proper storage and handling conditions.
RefSeq:	<a href="#">NP_001030335</a>
RefSeq Size:	376
RefSeq ORF:	210
Synonyms:	L38
Locus ID:	6169
UniProt ID:	<a href="#">P63173</a> , <a href="#">A0A024R8P8</a>
Cytogenetics:	17q25.1



[View online »](#)

**Summary:**

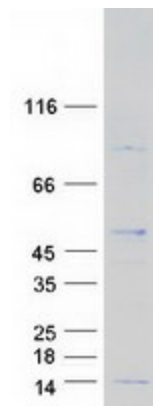
Ribosomes, the organelles that catalyze protein synthesis, consist of a small 40S subunit and a large 60S subunit. Together these subunits are composed of 4 RNA species and approximately 80 structurally distinct proteins. This gene encodes a ribosomal protein that is a component of the 60S subunit. The protein belongs to the L38E family of ribosomal proteins. It is located in the cytoplasm. Alternative splice variants have been identified, both encoding the same protein. As is typical for genes encoding ribosomal proteins, there are multiple processed pseudogenes of this gene dispersed through the genome, including one located in the promoter region of the type 1 angiotensin II receptor gene. [provided by RefSeq, Jul 2008]

**Protein Families:**

Druggable Genome

**Protein Pathways:**

Ribosome

**Product images:**

Coomassie blue staining of purified RPL38 protein (Cat# [TP300423]). The protein was produced from HEK293T cells transfected with RPL38 cDNA clone (Cat# [RC200423]) using MegaTran 2.0 (Cat# [TT210002]).