

Product datasheet for PH300421

SATB1 (NM_002971) Human Mass Spec Standard

Product data:

| | |
|---------------------------------------|---|
| Product Type: | Mass Spec Standards |
| Description: | SATB1 MS Standard C13 and N15-labeled recombinant protein (NP_002962) |
| Species: | Human |
| Expression Host: | HEK293 |
| Expression cDNA Clone or AA Sequence: | RC200421 |
| Predicted MW: | 86 kDa |
| Protein Sequence: | >RC200421 protein sequence Red=Cloning site Green=Tags(s) |

MDHLNEATQGKEHSEMSNNVSDPKGPPAKIARLEQNGSPLGRGRLGSTGAKMQGVPLKHSGLMKTNLRK
GTMLPVFCVVEHYENAI EYDCKEEHAEFVLRKDMLFNQLIEMALLSLGYSHSSAAQAKGLIQVGKWNPV
PLSYVTDAPDATVADMLQDVYHVVTLKIQLHSCP KLEDLPPEQWSHTTVRNALKDLLKDMNQSSLAKECP
LSQSMISSIVNSTYYANVSAAKCQEFGRWYKHFKKTKDMMVEMDSLSELSQGGANHVNFQQPVPVPGNTAE
QPPSPAQLSHGSQPSVRTPLPNLHPGLVSTPISPQLVNQQLVMAQLLNQQYAVNRLLAQQSLNQQYL NHP
PPVSRSMNKPLEQQVSTNTEVSSEIYQWVRDELKRAGISQAVFARVAFNRTOGLLSEILRKEEDPKTASQ
SLLVNL RAMQNFLQLPEAERDRIYQDERERSLNAASAMGPAPLISTPPSRPPQVKTIATERNKGPENN
TMNINASIYDEIQQEMKRAKVSQALFAKVAATKSQGWLCCELLRWKEDPSPENRTLWENLSMIRRFSLPQ
PERDAIYEQESNAVHHHGD RPPHI IHVPAEQIQQQQQQQQQQQQQAPPQPQQPQTGPRLPPRQPT
VASPAESDEENRQKTRPRTKISVEALGILQSF IQDVGLYPDEEAIQTL SAQLDLPKYTI IKFFQNQRYYL
KHHGKLDNSGLEVDVAEYKEEELLKDLEESVQDKNTNTLFSVKLEEELSVEGNTDINTDLKD

TRTRPLEQKLISEEDLAANDILDYKDDDDKV

| | |
|------------------|--|
| Tag: | C-Myc/DDK |
| Purity: | > 80% as determined by SDS-PAGE and Coomassie blue staining |
| Concentration: | >0.05 µg/µL as determined by microplate BCA method |
| Labeling Method: | Labeled with [U- ¹³ C ₆ , ¹⁵ N ₄]-L-Arginine and [U- ¹³ C ₆ , ¹⁵ N ₂]-L-Lysine |
| Buffer: | 25 mM Tris-HCl, 100 mM glycine, pH 7.3 |
| Storage: | Store at -80°C. Avoid repeated freeze-thaw cycles. |
| Stability: | Stable for 3 months from receipt of products under proper storage and handling conditions. |
| RefSeq: | NP_002962 |



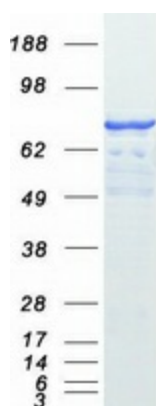
[View online »](#)

| | |
|---------------|---|
| RefSeq Size: | 5556 |
| RefSeq ORF: | 2289 |
| Synonyms: | DEFDA; KTZSL |
| Locus ID: | 6304 |
| UniProt ID: | Q01826 , A0A024R2H1 |
| Cytogenetics: | 3p24.3 |

Summary: This gene encodes a matrix protein which binds nuclear matrix and scaffold-associating DNAs through a unique nuclear architecture. The protein recruits chromatin-remodeling factors in order to regulate chromatin structure and gene expression. [provided by RefSeq, Apr 2016]

Protein Families: Druggable Genome, Transcription Factors

Product images:



Coomassie blue staining of purified SATB1 protein (Cat# [TP300421]). The protein was produced from HEK293T cells transfected with SATB1 cDNA clone (Cat# [RC200421]) using MegaTran 2.0 (Cat# [TT210002]).