

Product datasheet for PH300418

Glucose Transporter 5 GLUT5 (SLC2A5) (NM_003039) Human Mass Spec Standard

Product data:

Product Type:	Mass Spec Standards
Description:	SLC2A5 MS Standard C13 and N15-labeled recombinant protein (NP_003030)
Species:	Human
Expression Host:	HEK293
Expression cDNA Clone or AA Sequence:	RC200418
Predicted MW:	55 kDa
Protein Sequence:	>RC200418 protein sequence Red=Cloning site Green=Tags(s)

MEQQDQSMKEGRLTLVLALATLIAAFGSSFQYGYNVAAVNSPALLMQQFYNETYYGRTGEFMDFPLTLL
WSVTVSMFPFGGFIGSLLVGPLVNFGRKGALLFNNIFSIVPAILMGC SRVATSFELIIISRLLVGICAG
VSSNVVPMYLGELAPKNLRGALGVVPQLFITVIGILVAQIFGLRNLLANVDGWPILLGLTGVPAAALQLLLL
PFFPESPRYLLIQKKDEAAKKALQTLRGWDSVDREVAEIRQEDEAEKAAGFISVLKLFMRSLRWQLLS
IIVLMGGQQLSGVNAIYYYADQIYL SAGVPEEHVQYVYTAGTGAVNVVMTFCAVFVVELLGRRLLLLGF
ICLIACCVLTAALALQDTVSWMPYISIVCVISYVIGHALGPSPIPALLITEIFLQSSRPSAFMVGGSVHW
LSNFTVGLIFPFIQEGLGPYSFIVFAVICLLTTIYIFLIVPETKAKTFIEINQIFTKMNK VSEVYPEKEE
LKELPPVTSEQ

TRTRPLEQKLI SEEDLAANDILDYKDDDDKV

Tag:	C-Myc/DDK
Purity:	> 80% as determined by SDS-PAGE and Coomassie blue staining
Concentration:	>0.05 µg/µL as determined by microplate BCA method
Labeling Method:	Labeled with [U- ¹³ C ₆ , ¹⁵ N ₄]-L-Arginine and [U- ¹³ C ₆ , ¹⁵ N ₂]-L-Lysine
Buffer:	25 mM Tris-HCl, 100 mM glycine, pH 7.3
Storage:	Store at -80°C. Avoid repeated freeze-thaw cycles.
Stability:	Stable for 3 months from receipt of products under proper storage and handling conditions.
RefSeq:	<u>NP_003030</u>
RefSeq Size:	2454
RefSeq ORF:	1503



[View online »](#)

Synonyms: GLUT-5; GLUT5

Locus ID: 6518

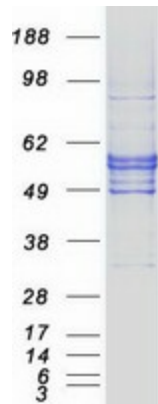
UniProt ID: [P22732](#)

Cytogenetics: 1p36.23

Summary: The protein encoded by this gene is a fructose transporter responsible for fructose uptake by the small intestine. The encoded protein also is necessary for the increase in blood pressure due to high dietary fructose consumption. [provided by RefSeq, Jun 2016]

Protein Families: Transmembrane

Product images:



Coomassie blue staining of purified SLC2A5 protein (Cat# [TP300418]). The protein was produced from HEK293T cells transfected with SLC2A5 cDNA clone (Cat# [RC200418]) using MegaTran 2.0 (Cat# [TT210002]).